

ZNF18 antibody - middle region
Rabbit Polyclonal Antibody
Catalog # AI12835**Specification**

ZNF18 antibody - middle region - Product Information

Application	WB
Primary Accession	P17022
Other Accession	NM_144680 , NP_653281
Reactivity	Human, Mouse, Rat, Horse, Guinea Pig, Dog
Predicted Host	Human, Mouse, Rat, Guinea Pig, Dog
Clonality	Rabbit
Calculated MW	Polyclonal 62kDa KDa

ZNF18 antibody - middle region - Additional Information**Gene ID** 7566**Alias Symbol** HDSG1, KOX11, ZKSCAN6, ZNF535, Zfp535
Other Names
Zinc finger protein 18, Heart development-specific gene 1 protein, Zinc finger protein 535, Zinc finger protein KOX11, Zinc finger protein with KRAB and SCAN domains 6, ZNF18, HDSG1, KOX11, ZKSCAN6, ZNF535**Format**

Liquid. Purified antibody supplied in 1x PBS buffer with 0.09% (w/v) sodium azide and 2% sucrose.

Reconstitution & Storage

Add 50 ul of distilled water. Final anti-ZNF18 antibody concentration is 1 mg/ml in PBS buffer with 2% sucrose. For longer periods of storage, store at 20°C. Avoid repeat freeze-thaw cycles.

Precautions

ZNF18 antibody - middle region is for research use only and not for use in diagnostic or therapeutic procedures.

ZNF18 antibody - middle region - Protein Information**Name** ZNF18**Synonyms** HDSG1, KOX11, ZKSCAN6, ZNF535**Function**

May be involved in transcriptional regulation.

Cellular Location

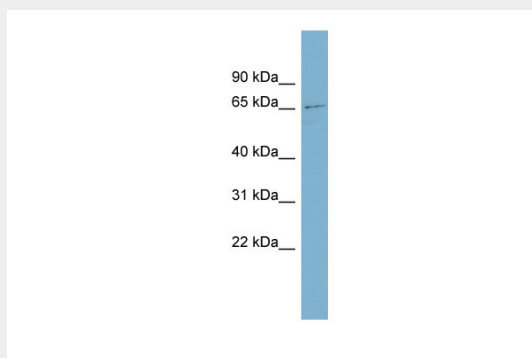
Nucleus {ECO:0000255|PROSITE-ProRule:PRU00187}.

ZNF18 antibody - middle region - Protocols

Provided below are standard protocols that you may find useful for product applications.

- [Western Blot](#)
- [Blocking Peptides](#)
- [Dot Blot](#)
- [Immunohistochemistry](#)
- [Immunofluorescence](#)
- [Immunoprecipitation](#)
- [Flow Cytometry](#)
- [Cell Culture](#)

ZNF18 antibody - middle region - Images



WB Suggested Anti-ZNF18 Antibody Titration: 0.2-1 μ g/ml

ELISA Titer: 1:62500

Positive Control: Human Stomach

ZNF18 antibody - middle region - References

Guo, L.L., (2005) YiChuan 27(4), 523-530 Reconstitution and Storage: For short term use, store at 2-8°C up to 1 week. For long term storage, store at -20°C in small aliquots to prevent freeze-thaw cycles.