

Ndrg2 antibody - middle region
Rabbit Polyclonal Antibody
Catalog # AI12863**Specification**

Ndrg2 antibody - middle region - Product Information

Application	WB
Primary Accession	O9OYG0
Other Accession	NM_013864 , NP_038892
Reactivity	Human, Mouse, Rat, Rabbit, Zebrafish, Pig, Horse, Bovine, Guinea Pig, Dog
Predicted	Human, Mouse, Rat, Rabbit, Zebrafish, Pig, Bovine, Guinea Pig, Dog
Host	Rabbit
Clonality	Polyclonal
Calculated MW	41kDa kDa

Ndrg2 antibody - middle region - Additional Information**Gene ID** 29811**Alias Symbol** AI182517, AU040374, Ndr2, SYLD**Other Names**

Protein NDRG2, N-myc downstream-regulated gene 2 protein, Protein Ndr2, Ndr2, Kiaa1248, Ndr2

Format

Liquid. Purified antibody supplied in 1x PBS buffer with 0.09% (w/v) sodium azide and 2% sucrose.

Reconstitution & Storage

Add 50 ul of distilled water. Final anti-Ndr2 antibody concentration is 1 mg/ml in PBS buffer with 2% sucrose. For longer periods of storage, store at 20°C. Avoid repeat freeze-thaw cycles.

Precautions

Ndr2 antibody - middle region is for research use only and not for use in diagnostic or therapeutic procedures.

Ndr2 antibody - middle region - Protein Information**Name** Ndr2**Synonyms** Kiaa1248, Ndr2**Function**

Contributes to the regulation of the Wnt signaling pathway. Down-regulates CTNNB1-mediated transcriptional activation of target genes, such as CCND1, and may thereby act as tumor suppressor. May be involved in dendritic cell and neuron differentiation (By similarity).

Cellular Location

Cytoplasm. Cytoplasm, perinuclear region. Cell projection, growth cone. Note=In neurons, seems to concentrate at axonal growth cone. Perinuclear in neurons (By similarity).

Tissue Location

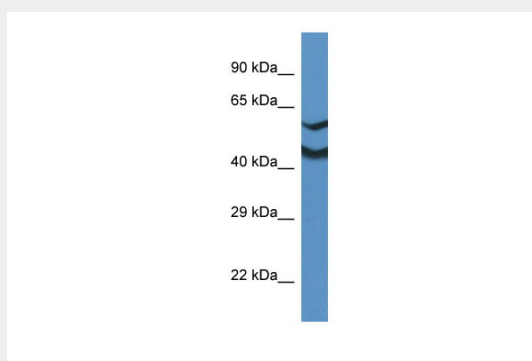
Expressed at highest levels in brain, heart and liver, and at lower levels in kidney, colon, skeletal muscle, adrenal gland, ovary and uterus (at protein level)

Ndrg2 antibody - middle region - Protocols

Provided below are standard protocols that you may find useful for product applications.

- [Western Blot](#)
- [Blocking Peptides](#)
- [Dot Blot](#)
- [Immunohistochemistry](#)
- [Immunofluorescence](#)
- [Immunoprecipitation](#)
- [Flow Cytometry](#)
- [Cell Culture](#)

Ndrg2 antibody - middle region - Images



WB Suggested Anti-Ndrg2 Antibody Titration: 1.0 µg/ml
Positive Control: Mouse Kidney