

**IL28RA antibody - N-terminal region**  
**Rabbit Polyclonal Antibody**  
**Catalog # AI12874**

**Specification**

---

**IL28RA antibody - N-terminal region - Product Information**

Application	WB
Primary Accession	<a href="#">Q8IU57</a>
Other Accession	<a href="#">NM_170743</a> , <a href="#">NP_734464</a>
Reactivity	Human, Rat, Rabbit, Pig, Horse, Bovine
Predicted	Human, Rabbit, Horse, Bovine, Dog
Host	Rabbit
Clonality	Polyclonal
Calculated MW	58kDa KDa

**IL28RA antibody - N-terminal region - Additional Information**

**Gene ID** 163702

**Alias Symbol** CRF2/12, IFNLR, IFNLR1, LICR2, il-28r1, IL-28R1, IL28RA

**Other Names**

Interferon lambda receptor 1, IFN-lambda receptor 1, IFN-lambda-R1, Cytokine receptor class-II member 12, Cytokine receptor family 2 member 12, CRF2-12, Interleukin-28 receptor subunit alpha, IL-28 receptor subunit alpha, IL-28R-alpha, IL-28RA, Likely interleukin or cytokine receptor 2, LICR2, IFNLR1, IL28RA, LICR2

**Format**

Liquid. Purified antibody supplied in 1x PBS buffer with 0.09% (w/v) sodium azide and 2% sucrose.

**Reconstitution & Storage**

Add 50 ul of distilled water. Final anti-IL28RA antibody concentration is 1 mg/ml in PBS buffer with 2% sucrose. For longer periods of storage, store at 20°C. Avoid repeat freeze-thaw cycles.

**Precautions**

IL28RA antibody - N-terminal region is for research use only and not for use in diagnostic or therapeutic procedures.

**IL28RA antibody - N-terminal region - Protein Information**

**Name** IFNLR1

**Synonyms** IL28RA, LICR2

**Function**

The IFNLR1/IL10RB dimer is a receptor for the cytokine ligands IFNL2 and IFNL3 and mediates their antiviral activity. The ligand/receptor complex stimulate the activation of the JAK/STAT signaling pathway leading to the expression of IFN-stimulated genes (ISG), which contribute to the antiviral

state. Determines the cell type specificity of the lambda interferon action. Shows a more restricted pattern of expression in the epithelial tissues thereby limiting responses to lambda interferons primarily to epithelial cells of the respiratory, gastrointestinal, and reproductive tracts. Seems not to be essential for early virus-activated host defense in vaginal infection, but plays an important role in Toll-like receptor (TLR)- induced antiviral defense. Plays a significant role in the antiviral immune defense in the intestinal epithelium.

#### Cellular Location

Membrane; Single-pass type I membrane protein

#### Tissue Location

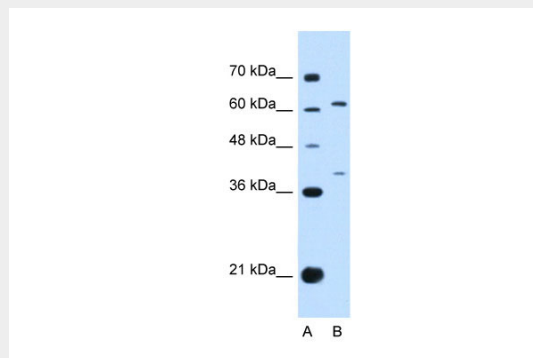
Widely expressed.

### IL28RA antibody - N-terminal region - Protocols

Provided below are standard protocols that you may find useful for product applications.

- [Western Blot](#)
- [Blocking Peptides](#)
- [Dot Blot](#)
- [Immunohistochemistry](#)
- [Immunofluorescence](#)
- [Immunoprecipitation](#)
- [Flow Cytometry](#)
- [Cell Culture](#)

### IL28RA antibody - N-terminal region - Images



WB Suggested Anti-IL28RA Antibody Titration: 0.2-1  $\mu$ g/ml  
Positive Control: HepG2 cell lysate

### IL28RA antibody - N-terminal region - References

Dumoutier, L., (2004) J. Biol. Chem. 279(31), 32269-32274 Reconstitution and Storage: For short term use, store at 2-8°C up to 1 week. For long term storage, store at -20°C in small aliquots to prevent freeze-thaw cycles.