

**PRDX2 antibody - middle region**  
**Rabbit Polyclonal Antibody**  
**Catalog # AI12896****Specification**

---

**PRDX2 antibody - middle region - Product Information**

Application	IHC, WB
Primary Accession	<a href="#">P35704</a>
Other Accession	<a href="#">NM_005809</a> , <a href="#">NP_005800</a>
Reactivity	Human, Mouse, Rat, Rabbit, Zebrafish, Goat, Sheep, Horse, Yeast, Bovine, Guinea Pig, Dog
Predicted	Human, Mouse, Rat, Zebrafish, Pig, Sheep, Bovine, Guinea Pig
Host	Rabbit
Clonality	Polyclonal
Calculated MW	22kDa KDa

**PRDX2 antibody - middle region - Additional Information****Gene ID** 29338**Alias Symbol** MGC4104, NKEFB, PRP, PRX2, PRXII, TDPX1, TSA, TPX1**Other Names**

Peroxioredoxin-2, 1.11.1.15, Thiol-specific antioxidant protein, TSA, Thioredoxin peroxidase 1, Thioredoxin-dependent peroxide reductase 1, Prdx2, Tdpx1

**Format**

Liquid. Purified antibody supplied in 1x PBS buffer with 0.09% (w/v) sodium azide and 2% sucrose.

**Reconstitution & Storage**

Add 50 ul of distilled water. Final anti-PRDX2 antibody concentration is 1 mg/ml in PBS buffer with 2% sucrose. For longer periods of storage, store at 20°C. Avoid repeat freeze-thaw cycles.

**Precautions**

PRDX2 antibody - middle region is for research use only and not for use in diagnostic or therapeutic procedures.

**PRDX2 antibody - middle region - Protein Information****Name** Prdx2**Synonyms** Tdpx1**Function**

Thiol-specific peroxidase that catalyzes the reduction of hydrogen peroxide and organic hydroperoxides to water and alcohols, respectively. Plays a role in cell protection against oxidative

stress by detoxifying peroxides and as sensor of hydrogen peroxide-mediated signaling events. Might participate in the signaling cascades of growth factors and tumor necrosis factor- $\alpha$  by regulating the intracellular concentrations of  $H_2O_2$ .

#### Cellular Location

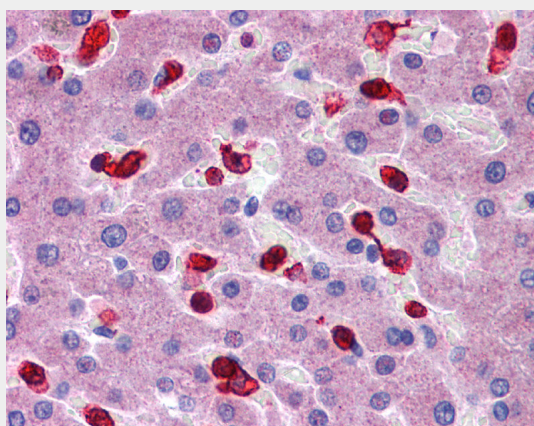
Cytoplasm {ECO:0000250|UniProtKB:P32119}.

#### PRDX2 antibody - middle region - Protocols

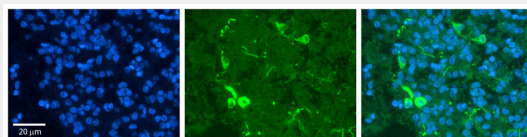
Provided below are standard protocols that you may find useful for product applications.

- [Western Blot](#)
- [Blocking Peptides](#)
- [Dot Blot](#)
- [Immunohistochemistry](#)
- [Immunofluorescence](#)
- [Immunoprecipitation](#)
- [Flow Cytometry](#)
- [Cell Culture](#)

#### PRDX2 antibody - middle region - Images



Liver



Rabbit Anti-PRDX2 Antibody

Formalin Fixed Paraffin Embedded Tissue: Human Pineal Tissue Observed Staining: Cytoplasmic in cell bodies and processes of pinealocytes

Primary Antibody

Concentration: 1:100 Other Working Concentrations: 1/600

Secondary Antibody: Donkey anti-Rabbit-Cy3

Secondary Antibody

Concentration: 1:200

Magnification: 20X

Exposure Time: 0.5 - 2.0 sec



WB Suggested Anti-PRDX2 Antibody Titration: 0.2-1 µg/ml

ELISA Titer: 1:312500

Positive Control: Hela cell lysate

PRDX2 is supported by BioGPS gene expression data to be expressed in HeLa

### **PRDX2 antibody - middle region - References**

Fang, J., (2007) Proc. Natl. Acad. Sci. U.S.A. 104(47), 18742-18747 Reconstitution and Storage: For short term use, store at 2-8°C up to 1 week. For long term storage, store at -20°C in small aliquots to prevent freeze-thaw cycles.