

Cfl2 Antibody - C-terminal region
Rabbit Polyclonal Antibody
Catalog # AI12907**Specification**

Cfl2 Antibody - C-terminal region - Product Information

Application	WB
Primary Accession	P45591
Other Accession	NM_007688 , NP_031714
Reactivity	Human, Mouse, Rat, Zebrafish, Pig, Horse, Bovine, Guinea Pig, Dog
Predicted	Human, Mouse, Rat, Zebrafish, Pig, Horse, Guinea Pig
Host	Rabbit
Clonality	Polyclonal
Calculated MW	19kDa KDa

Cfl2 Antibody - C-terminal region - Additional Information**Gene ID** 12632**Other Names**

Cofilin-2, Cofilin, muscle isoform, Cfl2

Format

Liquid. Purified antibody supplied in 1x PBS buffer with 0.09% (w/v) sodium azide and 2% sucrose.

Reconstitution & Storage

Add 50 ul of distilled water. Final anti-Cfl2 antibody concentration is 1 mg/ml in PBS buffer with 2% sucrose. For longer periods of storage, store at 20°C. Avoid repeat freeze-thaw cycles.

Precautions

Cfl2 Antibody - C-terminal region is for research use only and not for use in diagnostic or therapeutic procedures.

Cfl2 Antibody - C-terminal region - Protein Information**Name** Cfl2**Function**

Controls reversibly actin polymerization and depolymerization in a pH-sensitive manner. It has the ability to bind G- and F-actin in a 1:1 ratio of cofilin to actin. It is the major component of intranuclear and cytoplasmic actin rods. Required for muscle maintenance. May play a role during the exchange of alpha-actin forms during the early postnatal remodeling of the sarcomere.

Cellular Location

Nucleus matrix. Cytoplasm, cytoskeleton. Note=Colocalizes with CSPR3 in the Z line of sarcomeres {ECO:0000250|UniProtKB:Q9Y281}

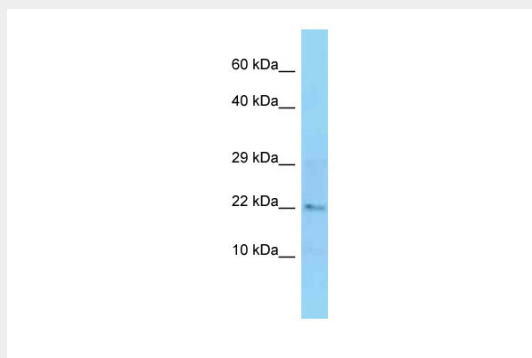
Tissue Location

Predominantly expressed in skeletal muscle.

Cfl2 Antibody - C-terminal region - Protocols

Provided below are standard protocols that you may find useful for product applications.

- [Western Blot](#)
- [Blocking Peptides](#)
- [Dot Blot](#)
- [Immunohistochemistry](#)
- [Immunofluorescence](#)
- [Immunoprecipitation](#)
- [Flow Cytometry](#)
- [Cell Culture](#)

Cfl2 Antibody - C-terminal region - Images

WB Suggested Anti-Cfl2 Antibody Titration: 1.0 µg/ml
Positive Control: Mouse Liver