

Polg antibody - N-terminal region
Rabbit Polyclonal Antibody
Catalog # AI12919**Specification**

Polg antibody - N-terminal region - Product Information

Application	WB
Primary Accession	O9QYV8
Other Accession	NM_053528 , NP_445980
Reactivity	Human, Mouse, Rat, Zebrafish, Horse, Yeast, Bovine, Guinea Pig, Dog
Predicted	Human, Mouse, Rat, Zebrafish, Pig, Horse, Bovine, Guinea Pig, Dog
Host	Rabbit
Clonality	Polyclonal
Calculated MW	136kDa KDa

Polg antibody - N-terminal region - Additional Information**Gene ID** 85472**Other Names**

DNA polymerase subunit gamma-1, 2.7.7.7, Mitochondrial DNA polymerase catalytic subunit, PolG-alpha, Polg, Mip1, Polg1

Format

Liquid. Purified antibody supplied in 1x PBS buffer with 0.09% (w/v) sodium azide and 2% sucrose.

Reconstitution & Storage

Add 50 ul of distilled water. Final anti-Polg antibody concentration is 1 mg/ml in PBS buffer with 2% sucrose. For longer periods of storage, store at 20°C. Avoid repeat freeze-thaw cycles.

Precautions

Polg antibody - N-terminal region is for research use only and not for use in diagnostic or therapeutic procedures.

Polg antibody - N-terminal region - Protein Information**Name** Polg {ECO:0000312|RGD:620057}**Synonyms** Mip1, Polg1**Function**

Catalytic subunit of DNA polymerase gamma solely responsible for replication of mitochondrial DNA (mtDNA). Replicates both heavy and light strands of the circular mtDNA genome using a single-stranded DNA template, RNA primers and the four deoxyribonucleoside triphosphates as substrates (By similarity). Has 5' -> 3' polymerase activity. Functionally interacts with TWNK and SSBP1 at the replication fork to form a highly processive replisome, where TWNK unwinds the

double-stranded DNA template prior to replication and SSBP1 covers the parental heavy strand to enable continuous replication of the entire mitochondrial genome. A single nucleotide incorporation cycle includes binding of the incoming nucleotide at the insertion site, a phosphodiester bond formation reaction that extends the 3'-end of the primer DNA, and translocation of the primer terminus to the post-insertion site. After completing replication of a mtDNA strand, mediates 3' → 5' exonucleolytic degradation at the nick to enable proper ligation (By similarity). Highly accurate due to high nucleotide selectivity and 3' → 5' exonucleolytic proofreading. Proficiently corrects base substitutions, single-base additions and deletions in non-repetitive sequences and short repeats, but displays lower proofreading activity when replicating longer homopolymeric stretches. Exerts exonuclease activity toward single-stranded DNA and double-stranded DNA containing 3'-terminal mismatches. When a misincorporation occurs, transitions from replication to a pro-nucleolytic editing mode and removes the misincorporated nucleoside in the exonuclease active site. Proceeds via an SN2 nucleolytic mechanism in which Asp-198 catalyzes phosphodiester bond hydrolysis and Glu-200 stabilizes the leaving group. As a result the primer strand becomes one nucleotide shorter and is positioned in the post-insertion site, ready to resume DNA synthesis (By similarity). Exerts 5'-deoxyribose phosphate (dRP) lyase activity and mediates repair-associated mtDNA synthesis (gap filling) in base-excision repair pathway. Catalyzes the release of the 5'-terminal 2-deoxyribose-5-phosphate sugar moiety from incised apurinic/apyrimidinic (AP) sites to produce a substrate for DNA ligase. The dRP lyase reaction does not require divalent metal ions and likely proceeds via a Schiff base intermediate in a beta-elimination reaction mechanism (By similarity).

Cellular Location

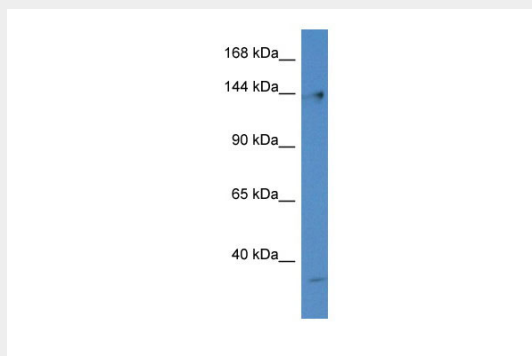
Mitochondrion {ECO:0000250|UniProtKB:P54098}. Mitochondrion matrix, mitochondrion nucleoid {ECO:0000250|UniProtKB:P54098}

Polg antibody - N-terminal region - Protocols

Provided below are standard protocols that you may find useful for product applications.

- [Western Blot](#)
- [Blocking Peptides](#)
- [Dot Blot](#)
- [Immunohistochemistry](#)
- [Immunofluorescence](#)
- [Immunoprecipitation](#)
- [Flow Cytometry](#)
- [Cell Culture](#)

Polg antibody - N-terminal region - Images



WB Suggested Anti-Polg Antibody Titration: 1.0 µg/ml
Positive Control: Rat Lung

