

PNPLA5 antibody - C-terminal region
Rabbit Polyclonal Antibody
Catalog # AI12973

Specification

PNPLA5 antibody - C-terminal region - Product Information

Application	WB
Primary Accession	O7Z6Z6
Other Accession	NM_138814 , NP_620169
Reactivity	Human
Predicted	Human
Host	Rabbit
Clonality	Polyclonal
Calculated MW	48kDa KDa

PNPLA5 antibody - C-terminal region - Additional Information

Gene ID 150379

Alias Symbol 4833426H19Rik, GS2L, dJ388M5, dJ388M5.4

Other Names

Patatin-like phospholipase domain-containing protein 5, 3.1.1.-, GS2-like protein, PNPLA5, GS2L

Format

Liquid. Purified antibody supplied in 1x PBS buffer with 0.09% (w/v) sodium azide and 2% sucrose.

Reconstitution & Storage

Add 50 ul of distilled water. Final anti-PNPLA5 antibody concentration is 1 mg/ml in PBS buffer with 2% sucrose. For longer periods of storage, store at 20°C. Avoid repeat freeze-thaw cycles.

Precautions

PNPLA5 antibody - C-terminal region is for research use only and not for use in diagnostic or therapeutic procedures.

PNPLA5 antibody - C-terminal region - Protein Information

Name PNPLA5 ([HGNC:24888](#))

Function

Has abundant triacylglycerol lipase activity.

Tissue Location

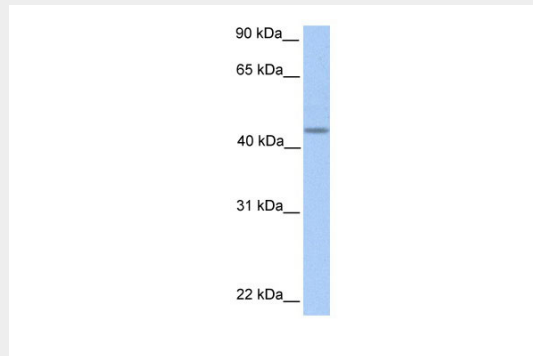
Expressed in brain and pituitary gland.

PNPLA5 antibody - C-terminal region - Protocols

Provided below are standard protocols that you may find useful for product applications.

- [Western Blot](#)
- [Blocking Peptides](#)
- [Dot Blot](#)
- [Immunohistochemistry](#)
- [Immunofluorescence](#)
- [Immunoprecipitation](#)
- [Flow Cytometry](#)
- [Cell Culture](#)

PNPLA5 antibody - C-terminal region - Images



WB Suggested Anti-PNPLA5 Antibody Titration: 0.2-1 µg/ml
Positive Control: Human Muscle

PNPLA5 antibody - C-terminal region - References

- Ota T., et al. Nat. Genet. 36:40-45(2004).
Dunham I., et al. Nature 402:489-495(1999).
Mural R.J., et al. Submitted (JUL-2005) to the EMBL/GenBank/DDBJ databases.
Wilson P.A., et al. J. Lipid Res. 47:1940-1949(2006).