

Sult1c2 antibody - middle region
Rabbit Polyclonal Antibody
Catalog # AI12988**Specification**

Sult1c2 antibody - middle region - Product Information

Application	WB
Primary Accession	O9WUW8
Other Accession	NM_133547 , NP_598231
Reactivity	Human, Mouse, Rat, Rabbit, Horse, Bovine, Guinea Pig, Dog
Predicted Host	Human, Rat, Bovine, Guinea Pig, Dog
Clonality	Rabbit
Calculated MW	Polyclonal 32kDa KDa

Sult1c2 antibody - middle region - Additional Information**Gene ID** 171072**Alias Symbol** MGC112625, MGC124969, ST1C2**Other Names**

Sulfotransferase 1C2, ST1C2, rSULT1C2, 2.8.2.-, Sulfotransferase K1, Sult1c2, Sultk1

Format

Liquid. Purified antibody supplied in 1x PBS buffer with 0.09% (w/v) sodium azide and 2% sucrose.

Reconstitution & Storage

Add 50 ul of distilled water. Final anti-Sult1c2 antibody concentration is 1 mg/ml in PBS buffer with 2% sucrose. For longer periods of storage, store at 20°C. Avoid repeat freeze-thaw cycles.

Precautions

Sult1c2 antibody - middle region is for research use only and not for use in diagnostic or therapeutic procedures.

Sult1c2 antibody - middle region - Protein Information**Name** Sult1c2**Synonyms** Sultk1**Function**

Sulfotransferase that utilizes 3'-phospho-5'-adenylyl sulfate (PAPS) as sulfonate donor to catalyze the sulfate conjugation of phenolic compounds. Does not sulfonate steroids, dopamine, acetaminophen, or alpha-naphthol. Catalyzes the sulfonation of the carcinogenic N-Hydroxy-2-acetylaminofluorene leading to highly reactive intermediates capable of forming DNA adducts, potentially resulting in mutagenesis (By similarity).

Cellular Location

Cytoplasm {ECO:0000250|UniProtKB:O46503}. Lysosome

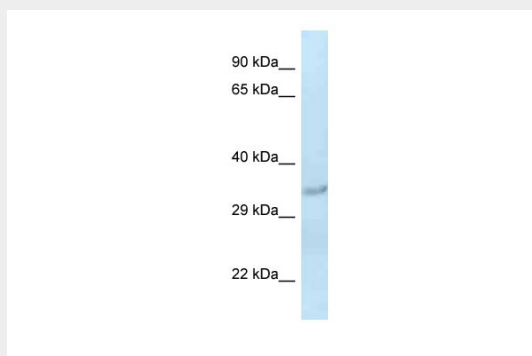
Tissue Location

Highly expressed in kidney and at lower levels in stomach and liver. More specifically found in the epithelia of proximal tubules of the kidney, of the bile duct, of the gastric mucosa, and in hepatocytes.

Sult1c2 antibody - middle region - Protocols

Provided below are standard protocols that you may find useful for product applications.

- [Western Blot](#)
- [Blocking Peptides](#)
- [Dot Blot](#)
- [Immunohistochemistry](#)
- [Immunofluorescence](#)
- [Immunoprecipitation](#)
- [Flow Cytometry](#)
- [Cell Culture](#)

Sult1c2 antibody - middle region - Images

WB Suggested Anti-Sult1c2 Antibody Titration: 1.0 µg/ml

Positive Control: Rat Liver

Sult1c2 antibody - middle region - References

Xiangrong L., et al. Biochem. Biophys. Res. Commun. 272:242-250(2000).
Sugimura K., et al. Kidney Int. 62:757-762(2002).