

H13 antibody - middle region
Rabbit Polyclonal Antibody
Catalog # AI13107**Specification**

H13 antibody - middle region - Product Information

Application	WB
Primary Accession	Q9D8V0
Other Accession	NM_010376 , NP_034506
Reactivity	Human, Mouse, Rat, Rabbit, Pig, Horse, Bovine, Guinea Pig, Dog
Predicted	Mouse
Host	Rabbit
Clonality	Polyclonal
Calculated MW	42kDa kDa

H13 antibody - middle region - Additional Information**Gene ID** 14950**Alias Symbol** 1200006O09Rik, 4930443L17Rik, 5031424B04Rik, AV020344, H-13, Hm13, PSL3, Spp**Other Names**

Minor histocompatibility antigen H13, 3.4.23.-, Presenilin-like protein 3, Signal peptide peptidase, Hm13, H13, Psl3

Format

Liquid. Purified antibody supplied in 1x PBS buffer with 0.09% (w/v) sodium azide and 2% sucrose.

Reconstitution & Storage

Add 50 ul of distilled water. Final anti-H13 antibody concentration is 1 mg/ml in PBS buffer with 2% sucrose. For longer periods of storage, store at 20°C. Avoid repeat freeze-thaw cycles.

Precautions

H13 antibody - middle region is for research use only and not for use in diagnostic or therapeutic procedures.

H13 antibody - middle region - Protein Information**Name** Hm13 {ECO:0000250|UniProtKB:Q8TCT9}**Function**

Catalyzes intramembrane proteolysis of signal peptides that have been removed from precursors of secretory and membrane proteins, resulting in the release of the fragment from the ER membrane into the cytoplasm (By similarity). Required to generate lymphocyte cell surface (HLA-E) epitopes derived from MHC class I signal peptides. Involved in the intramembrane cleavage of the integral membrane protein PSEN1. Cleaves the integral membrane protein XBP1

isoform 1 in a DERL1/RNF139- dependent manner (By similarity). May play a role in graft rejection (PubMed:9354467).

Cellular Location

Endoplasmic reticulum membrane; Multi-pass membrane protein. Membrane {ECO:0000250|UniProtKB:Q8TCT9}; Multi-pass membrane protein {ECO:0000250|UniProtKB:Q8TCT9}; Luminal side {ECO:0000250|UniProtKB:Q8TCT9}

Tissue Location

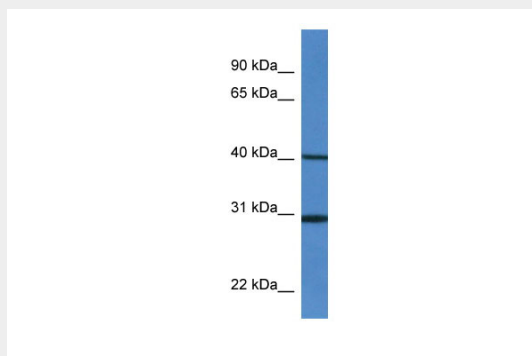
Widely expressed with highest levels in liver and kidney. In the brain, expressed predominantly in hippocampus, amygdala, piriform cortex, choroid plexus and arcuate nucleus of the hypothalamic area. Isoform 1 is more strongly expressed than isoform 4 in most tissues except brain and skeletal muscle where isoform 4 is the dominant isoform and in testis where isoform 1 and isoform 4 are expressed at similar levels. In the brain, isoform 4 is not detected in the choroid plexus.

H13 antibody - middle region - Protocols

Provided below are standard protocols that you may find useful for product applications.

- [Western Blot](#)
- [Blocking Peptides](#)
- [Dot Blot](#)
- [Immunohistochemistry](#)
- [Immunofluorescence](#)
- [Immunoprecipitation](#)
- [Flow Cytometry](#)
- [Cell Culture](#)

H13 antibody - middle region - Images



WB Suggested Anti-H13 Antibody Titration: 1.0 µg/ml
Positive Control: Mouse Spleen

H13 antibody - middle region - References

Urny J.,et al.Gene Expr. Patterns 3:685-691(2003).
Urny J.,et al.Biochim. Biophys. Acta 1759:159-165(2006).
Irmeler M.,et al.Submitted (SEP-2001) to the EMBL/GenBank/DDBJ databases.
Brown A.C.,et al.Submitted (FEB-2002) to the EMBL/GenBank/DDBJ databases.
Carninci P.,et al.Science 309:1559-1563(2005).