

**MED25 Antibody - C-terminal region**  
**Rabbit Polyclonal Antibody**  
**Catalog # AI13205****Specification**

---

**MED25 Antibody - C-terminal region - Product Information**

Application	WB, CHIP
Primary Accession	<a href="#">B9TX37</a>
Reactivity	Human, Mouse, Rat, Rabbit, Pig, Horse, Bovine, Dog
Predicted	Human, Mouse, Rat, Rabbit, Pig, Horse, Bovine, Dog
Host	Rabbit
Clonality	Polyclonal
Calculated MW	25kDa KDa

**MED25 Antibody - C-terminal region - Additional Information****Format**

Liquid. Purified antibody supplied in 1x PBS buffer with 0.09% (w/v) sodium azide and 2% sucrose.

**Reconstitution & Storage**

Add 50 µl of distilled water. Final Anti- antibody concentration is 1 mg/ml in PBS buffer with 2% sucrose. For longer periods of storage, store at -20°C. Avoid repeat freeze-thaw cycles.

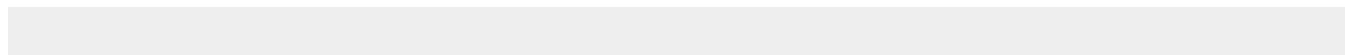
**Precautions**

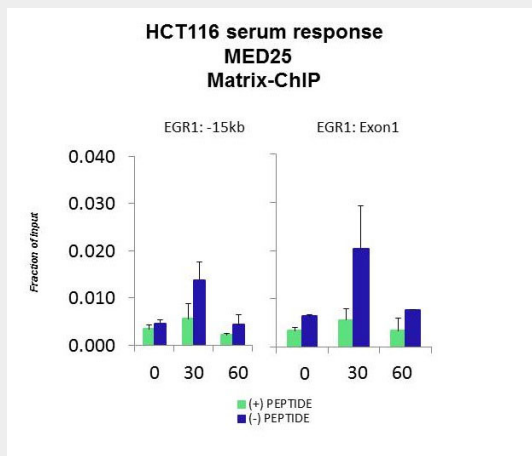
MED25 Antibody - C-terminal region is for research use only and not for use in diagnostic or therapeutic procedures.

**MED25 Antibody - C-terminal region - Protein Information****MED25 Antibody - C-terminal region - Protocols**

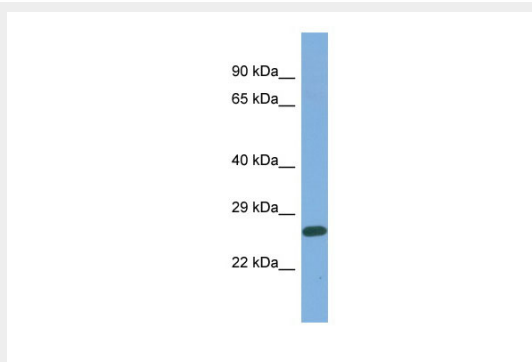
Provided below are standard protocols that you may find useful for product applications.

- [Western Blot](#)
- [Blocking Peptides](#)
- [Dot Blot](#)
- [Immunohistochemistry](#)
- [Immunofluorescence](#)
- [Immunoprecipitation](#)
- [Flow Cytometry](#)
- [Cell Culture](#)

**MED25 Antibody - C-terminal region - Images**



Quiescent human colon carcinoma HCT116 cultures were treated with 10% FBS for three time points (0, 15, 30min) or (0, 30, 60min) were used in Matrix-ChIP and real-time PCR assays at EGR1 gene (Exon1) and 15kb upstream site.



Host: Rabbit  
Target Name: MED25  
Sample Tissue: OVCAR-3 Whole cell lysate  
s  
Antibody Dilution: 1.0µg/ml