

C19orf2 antibody - middle region
Rabbit Polyclonal Antibody
Catalog # AI13222**Specification**

C19orf2 antibody - middle region - Product Information

Application	WB
Primary Accession	Q6NX55
Other Accession	NM_134447 , NP_604431
Reactivity	Human, Mouse, Rat, Rabbit, Horse, Bovine, Guinea Pig, Dog
Predicted Host	Rabbit, Horse
Clonality	Rabbit
Calculated MW	Polyclonal 55kDa KDa

C19orf2 antibody - middle region - Additional Information

Alias Symbol	FLJ10575, NNX3, RMP, URI, C19orf2, PPP1R19
--------------	--

Format

Liquid. Purified antibody supplied in 1x PBS buffer with 0.09% (w/v) sodium azide and 2% sucrose.

Reconstitution & Storage

Add 50 ul of distilled water. Final anti-C19orf2 antibody concentration is 1 mg/ml in PBS buffer with 2% sucrose. For longer periods of storage, store at 20°C. Avoid repeat freeze-thaw cycles.

Precautions

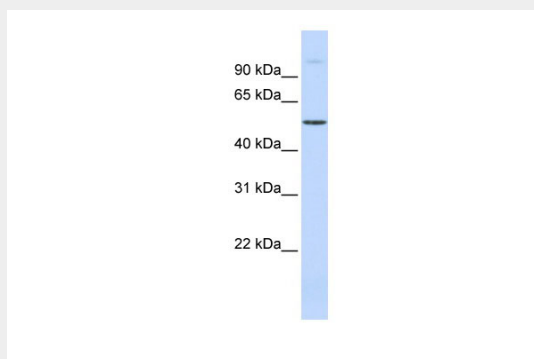
C19orf2 antibody - middle region is for research use only and not for use in diagnostic or therapeutic procedures.

C19orf2 antibody - middle region - Protein Information**C19orf2 antibody - middle region - Protocols**

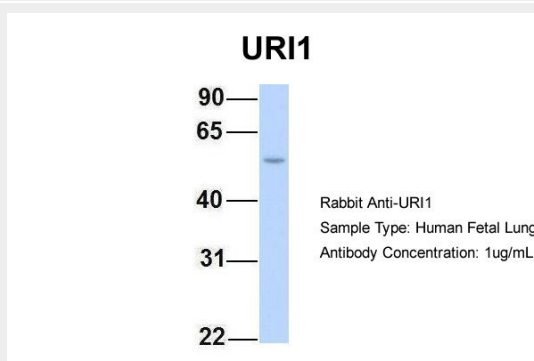
Provided below are standard protocols that you may find useful for product applications.

- [Western Blot](#)
- [Blocking Peptides](#)
- [Dot Blot](#)
- [Immunohistochemistry](#)
- [Immunofluorescence](#)
- [Immunoprecipitation](#)
- [Flow Cytometry](#)
- [Cell Culture](#)

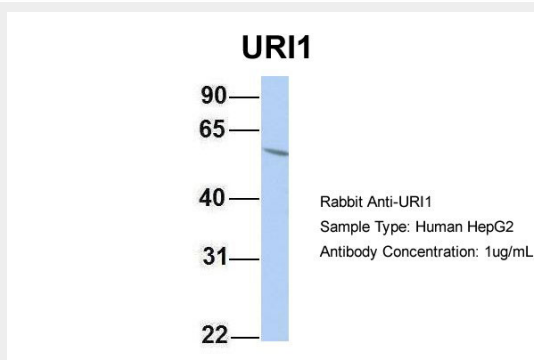
C19orf2 antibody - middle region - Images



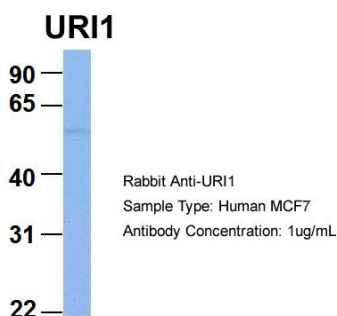
WB Suggested Anti-C19orf2 Antibody Titration: 0.2-1 µg/ml
Positive Control: Human Muscle



Host:Rabbit
Target Name:URI1
Sample Tissue:Human Fetal Lung
Antibody Dilution: 1.0µg/ml



Host:Rabbit
Target Name:URI1
Sample Tissue:HepG2
Antibody Dilution: 1.0µg/ml
There is BioGPS gene expression data showing that URI1 is expressed in HepG2

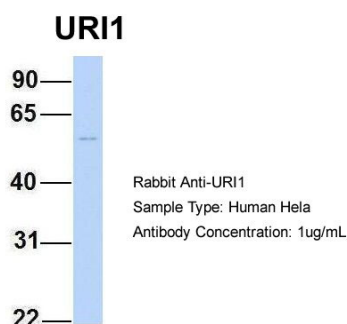


Host:Rabbit

Target Name:URI1

Sample Tissue:MCF7

Antibody Dilution: 1.0µg/ml There is BioGPS gene expression data showing that URI1 is expressed in MCF7

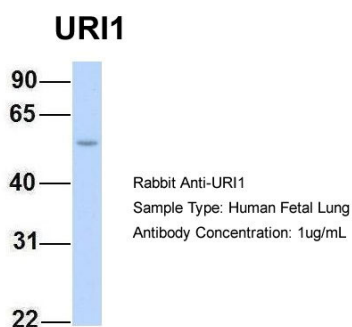


Host:Rabbit

Target Name:URI1

Sample Tissue:HeLa

Antibody Dilution: 1.0µg/ml There is BioGPS gene expression data showing that URI1 is expressed in HeLa



Host:Rabbit Target Name:URI1 Sample Tissue:Human Fetal Lung Antibody Dilution: 1.0ug/ml