

PRDM6 antibody - N-terminal region
Rabbit Polyclonal Antibody
Catalog # AI13269**Specification**

PRDM6 antibody - N-terminal region - Product Information

Application	WB
Primary Accession	O9NOX0
Other Accession	XM_937753 , XP_942846
Reactivity	Human
Host	Rabbit
Clonality	Polyclonal
Calculated MW	67kDa KDa

PRDM6 antibody - N-terminal region - Additional Information**Gene ID** 93166**Other Names**

Putative histone-lysine N-methyltransferase PRDM6, 2.1.1.43, PR domain zinc finger protein 6, PR domain-containing protein 6, PRDM6, PFM3

Format

Liquid. Purified antibody supplied in 1x PBS buffer with 0.09% (w/v) sodium azide and 2% sucrose.

Reconstitution & Storage

Add 50 ul of distilled water. Final anti-PRDM6 antibody concentration is 1 mg/ml in PBS buffer with 2% sucrose. For longer periods of storage, store at 20°C. Avoid repeat freeze-thaw cycles.

Precautions

PRDM6 antibody - N-terminal region is for research use only and not for use in diagnostic or therapeutic procedures.

PRDM6 antibody - N-terminal region - Protein Information**Name** PRDM6**Synonyms** PFM3**Function**

Putative histone methyltransferase that acts as a transcriptional repressor of smooth muscle gene expression. Promotes the transition from differentiated to proliferative smooth muscle by suppressing differentiation and maintaining the proliferative potential of vascular smooth muscle cells. Also plays a role in endothelial cells by inhibiting endothelial cell proliferation, survival and differentiation. It is unclear whether it has histone methyltransferase activity in vivo. According to some authors, it does not act as a histone methyltransferase by itself and represses transcription by recruiting EHMT2/G9a. According to others, it possesses histone methyltransferase activity when associated with other proteins and specifically methylates 'Lys-20' of histone H4 in vitro.

'Lys-20' methylation represents a specific tag for epigenetic transcriptional repression.

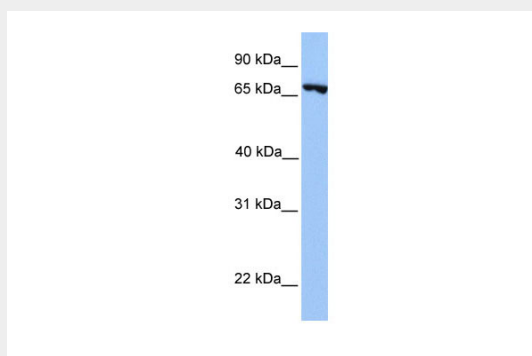
Cellular Location

Nucleus {ECO:0000250|UniProtKB:Q3UZD5}.

PRDM6 antibody - N-terminal region - Protocols

Provided below are standard protocols that you may find useful for product applications.

- [Western Blot](#)
- [Blocking Peptides](#)
- [Dot Blot](#)
- [Immunohistochemistry](#)
- [Immunofluorescence](#)
- [Immunoprecipitation](#)
- [Flow Cytometry](#)
- [Cell Culture](#)

PRDM6 antibody - N-terminal region - Images

WB Suggested Anti-PRDM6 Antibody Titration: 0.2-1 µg/ml
Positive Control: Jurkat cell lysate