

**Csnk1a1 Antibody - N-terminal region**  
**Rabbit Polyclonal Antibody**  
**Catalog # AI13336****Specification**

---

**Csnk1a1 Antibody - N-terminal region - Product Information**

Application	WB
Primary Accession	<a href="#">P97633</a>
Other Accession	<a href="#">NM_053615</a> , <a href="#">NP_446067</a>
Reactivity	Human, Mouse, Rat, Rabbit, Pig, Sheep, Horse, Bovine, Guinea Pig, Dog
Predicted	Human, Mouse, Rat, Rabbit, Pig, Sheep, Horse, Bovine, Guinea Pig, Dog
Host	Rabbit
Clonality	Polyclonal
Calculated MW	35kDa KDa

**Csnk1a1 Antibody - N-terminal region - Additional Information****Gene ID** 113927**Alias Symbol** **MGC156603**  
**Other Names**  
Casein kinase I isoform alpha, CKI-alpha, 2.7.11.1, CK1, Csnk1a1**Format**

Liquid. Purified antibody supplied in 1x PBS buffer with 0.09% (w/v) sodium azide and 2% sucrose.

**Reconstitution & Storage**

Add 50 ul of distilled water. Final anti-Csnk1a1 antibody concentration is 1 mg/ml in PBS buffer with 2% sucrose. For longer periods of storage, store at 20°C. Avoid repeat freeze-thaw cycles.

**Precautions**

Csnk1a1 Antibody - N-terminal region is for research use only and not for use in diagnostic or therapeutic procedures.

**Csnk1a1 Antibody - N-terminal region - Protein Information****Name** Csnk1a1**Function**

Casein kinases are operationally defined by their preferential utilization of acidic proteins such as caseins as substrates (By similarity). Can phosphorylate a large number of proteins (By similarity). Participates in Wnt signaling (PubMed:<a href="http://www.uniprot.org/citations/11955436" target="\_blank">11955436</a>). Phosphorylates CTNNB1 at 'Ser-45' (By similarity). May phosphorylate PER1 and PER2 (By similarity). May play a role in segregating chromosomes during mitosis. May play a role in keratin cytoskeleton disassembly and thereby, it may regulate epithelial cell migration (By similarity). Acts as a positive regulator of mTORC1 and mTORC2 signaling in

response to nutrients by mediating phosphorylation of DEPTOR inhibitor (By similarity). Acts as an inhibitor of NLRP3 inflammasome assembly by mediating phosphorylation of NLRP3 (By similarity).

#### Cellular Location

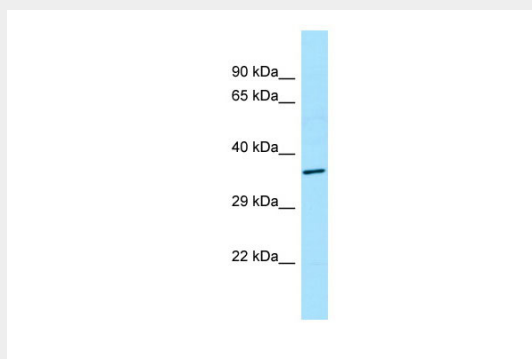
Cytoplasm {ECO:0000250|UniProtKB:P48729}. Cytoplasm, cytoskeleton, microtubule organizing center, centrosome {ECO:0000250|UniProtKB:P48729}. Chromosome, centromere, kinetochore {ECO:0000250|UniProtKB:P48729}. Nucleus speckle {ECO:0000250|UniProtKB:P48729}. Cytoplasm, cytoskeleton, cilium basal body {ECO:0000250|UniProtKB:Q8BK63}. Cytoplasm, cytoskeleton, spindle {ECO:0000250|UniProtKB:Q8BK63}. Note=Localizes to the centrosome in interphase cells, and to kinetochore fibers during mitosis. Also recruited to the keratin cytoskeleton. {ECO:0000250|UniProtKB:P48729}

#### Csnk1a1 Antibody - N-terminal region - Protocols

Provided below are standard protocols that you may find useful for product applications.

- [Western Blot](#)
- [Blocking Peptides](#)
- [Dot Blot](#)
- [Immunohistochemistry](#)
- [Immunofluorescence](#)
- [Immunoprecipitation](#)
- [Flow Cytometry](#)
- [Cell Culture](#)

#### Csnk1a1 Antibody - N-terminal region - Images



WB Suggested Anti-Csnk1a1 Antibody Titration: 1.0 µg/ml  
Positive Control: Rat Thymus

#### Csnk1a1 Antibody - N-terminal region - References

Zhang J., et al. Biochemistry 35:16319-16327(1996).  
Liu C., et al. Cell 108:837-847(2002).