

Taf8 antibody - middle region
Rabbit Polyclonal Antibody
Catalog # AI13441**Specification**

Taf8 antibody - middle region - Product Information

Application	WB
Primary Accession	O9EQH4
Other Accession	NM_022015 , NP_071298
Reactivity	Human, Mouse, Rat, Rabbit, Horse, Bovine, Guinea Pig, Dog
Predicted	Human, Mouse, Rat, Rabbit, Chicken, Horse, Bovine, Dog
Host	Rabbit
Clonality	Polyclonal
Calculated MW	34kDa kDa

Taf8 antibody - middle region - Additional Information**Gene ID** 63856**Alias Symbol** **AW260255, Tbn****Other Names**

Transcription initiation factor TFIID subunit 8, Protein taube nuss, TBP-associated factor 8, Taf8, Tbn

Format

Liquid. Purified antibody supplied in 1x PBS buffer with 0.09% (w/v) sodium azide and 2% sucrose.

Reconstitution & Storage

Add 50 ul of distilled water. Final anti-Taf8 antibody concentration is 1 mg/ml in PBS buffer with 2% sucrose. For longer periods of storage, store at 20°C. Avoid repeat freeze-thaw cycles.

Precautions

Taf8 antibody - middle region is for research use only and not for use in diagnostic or therapeutic procedures.

Taf8 antibody - middle region - Protein Information**Name** Taf8**Synonyms** Tbn**Function**

The TFIID basal transcription factor complex plays a major role in the initiation of RNA polymerase II (Pol II)-dependent transcription (By similarity). TFIID recognizes and binds promoters with or without a TATA box via its subunit TBP, a TATA-box-binding protein, and promotes assembly of the pre-initiation complex (PIC) (By similarity). The TFIID complex consists of TBP and TBP-associated

factors (TAFs), including TAF1, TAF2, TAF3, TAF4, TAF5, TAF6, TAF7, TAF8, TAF9, TAF10, TAF11, TAF12 and TAF13 (By similarity). The TFIID complex structure can be divided into 3 modules TFIID-A, TFIID-B, and TFIID-C (By similarity). TAF8 is involved in forming the TFIID-B module, together with TAF5 (By similarity). Mediates both basal and activator-dependent transcription (By similarity). Plays a role in the differentiation of preadipocyte fibroblasts to adipocytes, however, does not seem to play a role in differentiation of myoblasts (PubMed:14580349). Required for the integration of TAF10 in the TAF complex (By similarity). May be important for survival of cells of the inner cell mass which constitute the pluripotent cell population of the early embryo (PubMed:11076765).

Cellular Location

Nucleus. Cytoplasm. Note=Localized in the cytoplasm and transported from the cytoplasm to the nucleus in some cells, possibly depending on the functional or developmental state of the cell

Tissue Location

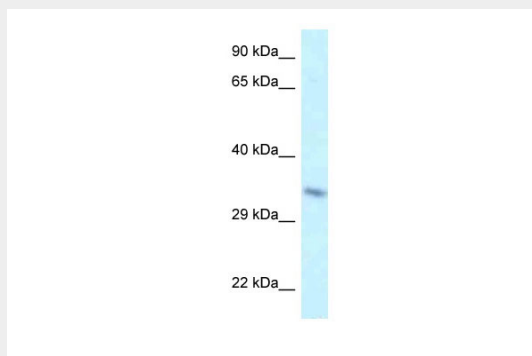
Low level of expression throughout the brain with slightly higher expression in the hippocampus

Taf8 antibody - middle region - Protocols

Provided below are standard protocols that you may find useful for product applications.

- [Western Blot](#)
- [Blocking Peptides](#)
- [Dot Blot](#)
- [Immunohistochemistry](#)
- [Immunofluorescence](#)
- [Immunoprecipitation](#)
- [Flow Cytometry](#)
- [Cell Culture](#)

Taf8 antibody - middle region - Images



WB Suggested Anti-Taf8 Antibody Titration: 1.0 µg/ml
Positive Control: Mouse Heart

Taf8 antibody - middle region - References

Voss A.K.,et al.Development 127:5449-5461(2000).
Carninci P.,et al.Science 309:1559-1563(2005).
Guermah M.,et al.Mol. Cell 12:991-1001(2003).