

ARL13B antibody - middle region
Rabbit Polyclonal Antibody
Catalog # AI13456**Specification**

ARL13B antibody - middle region - Product Information

Application	WB
Primary Accession	Q8TCL5
Other Accession	NM_144996 , NP_659433
Reactivity	Human, Mouse, Rat, Rabbit, Horse, Bovine, Guinea Pig, Dog
Predicted	Human, Mouse, Chicken, Horse, Guinea Pig, Dog
Host	Rabbit
Clonality	Polyclonal
Calculated MW	36kDa KDa

ARL13B antibody - middle region - Additional Information

Alias Symbol	ARL2L1, DKFZp686E2075, DKFZp686L2472, DKFZp686M2074, DKFZp761H079, MGC120611, MGC120612, JBTS8
--------------	--

Format

Liquid. Purified antibody supplied in 1x PBS buffer with 0.09% (w/v) sodium azide and 2% sucrose.

Reconstitution & Storage

Add 50 ul of distilled water. Final anti-ARL13B antibody concentration is 1 mg/ml in PBS buffer with 2% sucrose. For longer periods of storage, store at 20°C. Avoid repeat freeze-thaw cycles.

Precautions

ARL13B antibody - middle region is for research use only and not for use in diagnostic or therapeutic procedures.

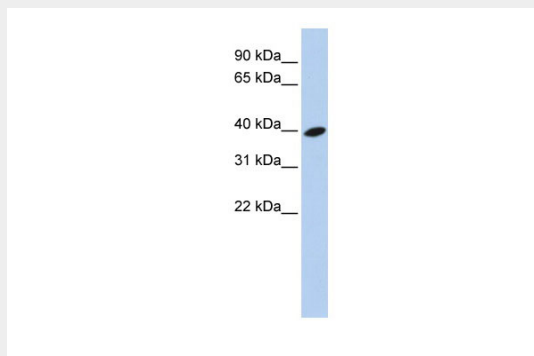
ARL13B antibody - middle region - Protein Information**ARL13B antibody - middle region - Protocols**

Provided below are standard protocols that you may find useful for product applications.

- [Western Blot](#)
- [Blocking Peptides](#)
- [Dot Blot](#)
- [Immunohistochemistry](#)
- [Immunofluorescence](#)
- [Immunoprecipitation](#)
- [Flow Cytometry](#)

- [Cell Culture](#)

ARL13B antibody - middle region - Images



WB Suggested Anti-ARL13B Antibody Titration: 0.2-1 $\mu\text{g/ml}$

ELISA Titer: 1:312500

Positive Control: 721_B cell lysate