

LPP antibody - N-terminal region
Rabbit Polyclonal Antibody
Catalog # AI13591**Specification**

LPP antibody - N-terminal region - Product Information

Application	WB
Primary Accession	O93052
Other Accession	NM_005578 , NP_005569
Reactivity	Human, Mouse, Rabbit, Horse, Bovine, Dog
Predicted	Human, Mouse, Rabbit, Horse, Bovine, Dog
Host	Rabbit
Clonality	Polyclonal
Calculated MW	67kDa KDa

LPP antibody - N-terminal region - Additional Information**Gene ID** 4026**Other Names**

Lipoma-preferred partner, LIM domain-containing preferred translocation partner in lipoma, LPP

Format

Liquid. Purified antibody supplied in 1x PBS buffer with 0.09% (w/v) sodium azide and 2% sucrose.

Reconstitution & Storage

Add 50 ul of distilled water. Final anti-LPP antibody concentration is 1 mg/ml in PBS buffer with 2% sucrose. For longer periods of storage, store at 20°C. Avoid repeat freeze-thaw cycles.

Precautions

LPP antibody - N-terminal region is for research use only and not for use in diagnostic or therapeutic procedures.

LPP antibody - N-terminal region - Protein Information**Name** LPP**Function**

May play a structural role at sites of cell adhesion in maintaining cell shape and motility. In addition to these structural functions, it may also be implicated in signaling events and activation of gene transcription. May be involved in signal transduction from cell adhesion sites to the nucleus allowing successful integration of signals arising from soluble factors and cell-cell adhesion sites. Also suggested to serve as a scaffold protein upon which distinct protein complexes are assembled in the cytoplasm and in the nucleus.

Cellular Location

Nucleus. Cytoplasm. Cell junction. Cell membrane. Note=Found in the nucleus, in the cytoplasm and at cell adhesion sites Shuttles between the cytoplasm and the nucleus. It has been found in

sites of cell adhesion such as cell-to-cell contact and focal adhesion which are membrane attachment sites of cells to the extracellular matrix. Mainly nuclear when fused with HMGA2/HMGIC and KMT2A/MLL1

Tissue Location

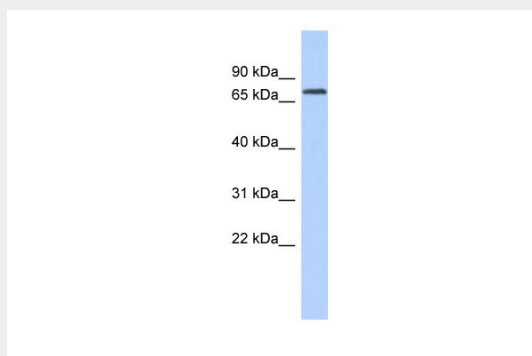
Expressed in a wide variety of tissues but no or very low expression in brain and peripheral leukocytes

LPP antibody - N-terminal region - Protocols

Provided below are standard protocols that you may find useful for product applications.

- [Western Blot](#)
- [Blocking Peptides](#)
- [Dot Blot](#)
- [Immunohistochemistry](#)
- [Immunofluorescence](#)
- [Immunoprecipitation](#)
- [Flow Cytometry](#)
- [Cell Culture](#)

LPP antibody - N-terminal region - Images



WB Suggested Anti-LPP Antibody Titration: 0.2-1 µg/ml

ELISA Titer: 1:312500

Positive Control: COLO205 cell lysate

LPP is supported by BioGPS gene expression data to be expressed in COLO205

LPP antibody - N-terminal region - References

- Petit M.M.R., et al. Genomics 36:118-129(1996).
Ebert L., et al. Submitted (JUN-2004) to the EMBL/GenBank/DDBJ databases.
Mural R.J., et al. Submitted (SEP-2005) to the EMBL/GenBank/DDBJ databases.
Lemke I., et al. Cytogenet. Cell Genet. 95:153-156(2001).
Petit M.M., et al. Cancer Genet. Cytogenet. 106:18-23(1998).