

FEM1B antibody - middle region
Rabbit Polyclonal Antibody
Catalog # AI13598**Specification****FEM1B antibody - middle region - Product Information**

Application	WB
Primary Accession	Q9UK73
Other Accession	NM_015322 , NP_056137
Reactivity	Human, Mouse, Rat, Rabbit, Horse, Bovine, Guinea Pig, Dog
Predicted	Human, Mouse, Rat, Rabbit, Pig, Chicken, Horse, Bovine, Dog
Host	Rabbit
Clonality	Polyclonal
Calculated MW	69kDa KDa

FEM1B antibody - middle region - Additional Information**Gene ID** 10116**Alias Symbol** **DKFZp451E0710, F1AA, F1A-ALPHA****Other Names**

Protein fem-1 homolog B, FEM1b, FEM1-beta, Fem-1-like death receptor-binding protein alpha, Fem-1-like in apoptotic pathway protein alpha, F1A-alpha, FEM1B, F1AA, KIAA0396

Format

Liquid. Purified antibody supplied in 1x PBS buffer with 0.09% (w/v) sodium azide and 2% sucrose.

Reconstitution & Storage

Add 50 ul of distilled water. Final anti-FEM1B antibody concentration is 1 mg/ml in PBS buffer with 2% sucrose. For longer periods of storage, store at 20°C. Avoid repeat freeze-thaw cycles.

Precautions

FEM1B antibody - middle region is for research use only and not for use in diagnostic or therapeutic procedures.

FEM1B antibody - middle region - Protein Information**Name** FEM1B {ECO:0000303|PubMed:10623617, ECO:0000312|HGNC:HGNC:3649}**Function**

Substrate-recognition component of a Cul2-RING (CRL2) E3 ubiquitin-protein ligase complex of the DesCEND (destruction via C-end degrons) pathway, which recognizes a C-degron located at the extreme C terminus of target proteins, leading to their ubiquitination and degradation (PubMed:29779948, PubMed:33398168, PubMed:33398170). The C-

degron recognized by the DesCEND pathway is usually a motif of less than ten residues and can be present in full-length proteins, truncated proteins or proteolytically cleaved forms (PubMed:29779948, PubMed:33398168, PubMed:33398170). The CRL2(FEM1B) complex specifically recognizes proteins ending with -Gly-Leu-Asp-Arg, such as CDK5R1, leading to their ubiquitination and degradation (PubMed:33398168, PubMed:33398170). Also acts as a regulator of the reductive stress response by mediating ubiquitination of reduced FNIP1: in response to reductive stress, the CRL2(FEM1B) complex specifically recognizes a conserved Cys degron in FNIP1 when this degron is reduced, leading to FNIP1 degradation and subsequent activation of mitochondria to recalibrate reactive oxygen species (ROS) (By similarity). Mechanistically, recognizes and binds reduced FNIP1 through two interface zinc ions, which act as a molecular glue that recruit reduced FNIP1 to FEM1B (By similarity). Promotes ubiquitination of GLI1, suppressing GLI1 transcriptional activator activity (PubMed:24076122). Promotes ubiquitination and degradation of ANKRD37 (By similarity). Promotes ubiquitination and degradation of SLBP (PubMed:28118078). Involved in apoptosis by acting as a death receptor-associated protein that mediates apoptosis (PubMed:10542291). Also involved in glucose homeostasis in pancreatic islet (By similarity). May also act as an adapter/mediator in replication stress-induced signaling that leads to the activation of CHEK1 (PubMed:19330022).

Cellular Location

Cytoplasm. Nucleus Note=In the nucleus, the protein level increased slightly after camptothecin (CPT) treatment (PubMed:19330022). Associated with chromatin (PubMed:19330022).

Tissue Location

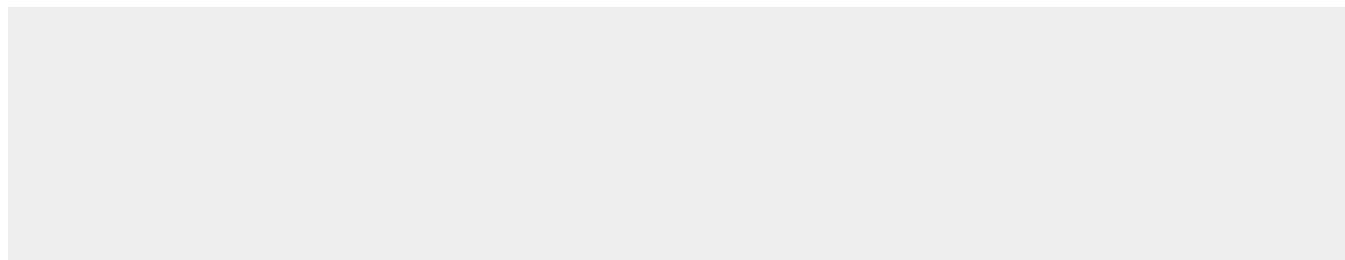
Widely expressed (PubMed:10542291). Highly expressed in testis (PubMed:10542291). Weakly expressed in other tissues (PubMed:10542291).

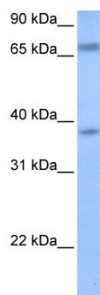
FEM1B antibody - middle region - Protocols

Provided below are standard protocols that you may find useful for product applications.

- [Western Blot](#)
- [Blocking Peptides](#)
- [Dot Blot](#)
- [Immunohistochemistry](#)
- [Immunofluorescence](#)
- [Immunoprecipitation](#)
- [Flow Cytometry](#)
- [Cell Culture](#)

FEM1B antibody - middle region - Images



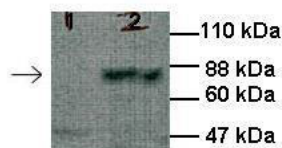


WB Suggested Anti-FEM1B Antibody Titration: 0.2-1 μ g/ml

Positive Control: 721_B cell lysate

FEM1B is strongly supported by BioGPS gene expression data to be expressed in Human 721_B cells

FEM1B



See Immunoblot 2 Data and customer Feedback for more Information

Lanes: 1: 30ug HEK293T cell lysate

, 2: 30ug 3FLAG-hFEM1B transfected HEK293T cell lysate

Primary Antibody Dilution: 1:1000

Secondary Antibody: Anti-rabbit HRP

Secondary Antibody Dilution: 1:8000

Gene Name: FEM1B

FEM1B antibody - middle region - References

Chan S.-L.,et al.J. Biol. Chem. 274:32461-32468(1999).

Ventura-Holman T.,et al.Biochem. Biophys. Res. Commun. 267:317-320(2000).

Ishikawa K.,et al.DNA Res. 4:307-313(1997).

Nakajima D.,et al.DNA Res. 9:99-106(2002).

Ota T.,et al.Nat. Genet. 36:40-45(2004).