

IL5 antibody - middle region
Rabbit Polyclonal Antibody
Catalog # AI13638**Specification**

IL5 antibody - middle region - Product Information

Application	WB
Primary Accession	P04401
Other Accession	NM_010558 , NP_034688
Reactivity	Human, Mouse, Rat, Rabbit, Guinea Pig
Predicted	Human, Mouse, Rat, Guinea Pig
Host	Rabbit
Clonality	Polyclonal
Calculated MW	15kDa kDa

IL5 antibody - middle region - Additional Information**Gene ID** 16191**Alias Symbol** **IL-5****Other Names**

Interleukin-5, IL-5, B-cell growth factor II, BCGF-II, Cytotoxic T-lymphocyte inducer, Eosinophil differentiation factor, T-cell replacing factor, TRF, IL5, IL-5

Format

Liquid. Purified antibody supplied in 1x PBS buffer with 0.09% (w/v) sodium azide and 2% sucrose.

Reconstitution & Storage

Add 50 ul of distilled water. Final anti-IL5 antibody concentration is 1 mg/ml in PBS buffer with 2% sucrose. For longer periods of storage, store at 20°C. Avoid repeat freeze-thaw cycles.

Precautions

IL5 antibody - middle region is for research use only and not for use in diagnostic or therapeutic procedures.

IL5 antibody - middle region - Protein Information**Name** IL5**Synonyms** IL-5**Function**Homodimeric cytokine expressed predominantly by T-lymphocytes and NK cells that plays an important role in the survival, differentiation, and chemotaxis of eosinophils (PubMed: [10444455](http://www.uniprot.org/citations/10444455), PubMed: [1873482](http://www.uniprot.org/citations/1873482)). Also acts on activated and resting B-cells to induce immunoglobulin production, growth, and differentiation (PubMed: [3128631](http://www.uniprot.org/citations/3128631)).

Mechanistically, exerts its biological effects through a receptor composed of IL5RA subunit and the cytokine receptor common subunit beta/CSF2RB. Binding to the receptor leads to activation of various kinases including LYN, SYK and JAK2 and thereby propagates signals through the RAS-MAPK and JAK-STAT5 pathways respectively (By similarity).

Cellular Location

Secreted.

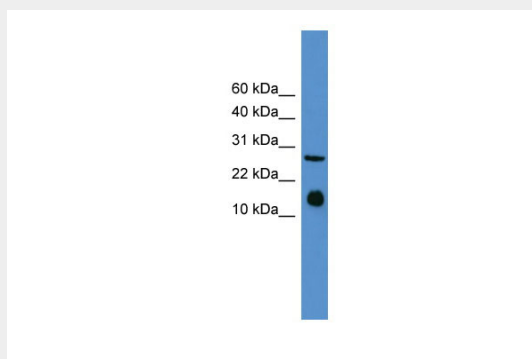
Tissue Location

Expressed in lymphoid cells, including spleen, thymus, lymph nodes and peripheral blood mononuclear cells

IL5 antibody - middle region - Protocols

Provided below are standard protocols that you may find useful for product applications.

- [Western Blot](#)
- [Blocking Peptides](#)
- [Dot Blot](#)
- [Immunohistochemistry](#)
- [Immunofluorescence](#)
- [Immunoprecipitation](#)
- [Flow Cytometry](#)
- [Cell Culture](#)

IL5 antibody - middle region - Images

WB Suggested Anti-IL5 Antibody Titration: 0.2-1 µg/ml

ELISA Titer: 1:312500

Positive Control: Mouse Spleen

IL5 antibody - middle region - References

Campbell H.D., et al. Eur. J. Biochem. 174:345-352(1988).
Kinashi T., et al. Nature 324:70-73(1986).
Mizuta T.R., et al. Growth Factors 1:51-57(1988).
Takahashi T., et al. Mol. Immunol. 27:911-920(1990).