

FRZB antibody - middle region
Rabbit Polyclonal Antibody
Catalog # AI13663**Specification**

FRZB antibody - middle region - Product Information

Application	WB, IHC
Primary Accession	O92765
Other Accession	NM_001463 , NP_001454
Reactivity	Human, Mouse, Rat, Rabbit, Pig, Horse, Bovine, Guinea Pig, Dog
Predicted Host	Human, Mouse, Rat, Pig, Chicken, Dog
Clonality	Rabbit
Calculated MW	Polyclonal 36kDa KDa

FRZB antibody - middle region - Additional Information**Gene ID 2487**

Alias Symbol	FRE, FRITZ, FRP-3, FRZB-1, FRZB-PEN, FRZB1, FZRB, SFRP3, SRFP3, hFIZ, OS1
--------------	---

Other Names

Secreted frizzled-related protein 3, sFRP-3, Frezzled, Fritz, Frizzled-related protein 1, FrzB-1, FRZB, FIZ, FRE, FRP, FRZB1, SFRP3

Format

Liquid. Purified antibody supplied in 1x PBS buffer with 0.09% (w/v) sodium azide and 2% sucrose.

Reconstitution & Storage

Add 50 ul of distilled water. Final anti-FRZB antibody concentration is 1 mg/ml in PBS buffer with 2% sucrose. For longer periods of storage, store at 20°C. Avoid repeat freeze-thaw cycles.

Precautions

FRZB antibody - middle region is for research use only and not for use in diagnostic or therapeutic procedures.

FRZB antibody - middle region - Protein Information**Name FRZB****Synonyms FIZ, FRE, FRP, FRZB1, SFRP3****Function**

Soluble frizzled-related proteins (sFRPS) function as modulators of Wnt signaling through direct interaction with Wnts. They have a role in regulating cell growth and differentiation in specific cell types. SFRP3/FRZB appears to be involved in limb skeletogenesis. Antagonist of Wnt8 signaling. Regulates chondrocyte maturation and long bone development.

Cellular Location

Secreted.

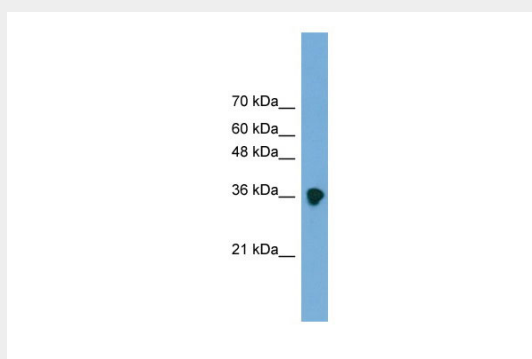
Tissue Location

Expressed primarily in the cartilaginous cores of the long bone during embryonic and fetal development and in the appendicular skeleton (6-13 weeks). At 13 weeks of gestation, transcripts were present in early chondroblasts of the tarsal bones of the foot, the carpal bones of the hands and the epiphysis of long bones. Highly expressed in placenta and heart, followed by brain, skeletal muscle, kidney and pancreas. Weakly expressed in lung and liver

FRZB antibody - middle region - Protocols

Provided below are standard protocols that you may find useful for product applications.

- [Western Blot](#)
- [Blocking Peptides](#)
- [Dot Blot](#)
- [Immunohistochemistry](#)
- [Immunofluorescence](#)
- [Immunoprecipitation](#)
- [Flow Cytometry](#)
- [Cell Culture](#)

FRZB antibody - middle region - Images

WB Suggested Anti-FRZB Antibody Titration: 0.2-1 µg/ml

ELISA Titer: 1:1562500

Positive Control: Transfected 293T

FRZB antibody - middle region - References

Hoang B.,et al.J. Biol. Chem. 271:26131-26137(1996).
Mayr T.,et al.Mech. Dev. 63:109-125(1997).
Leyns L.,et al.Cell 88:747-756(1997).
Kalnine N.,et al.Submitted (OCT-2004) to the EMBL/GenBank/DDBJ databases.
Zhang Z.,et al.Protein Sci. 13:2819-2824(2004).