

PLDN antibody - middle region
Rabbit Polyclonal Antibody
Catalog # AI13706**Specification**

PLDN antibody - middle region - Product Information

Application	WB
Primary Accession	O9UL45
Other Accession	NM_012388 , NP_036520
Reactivity	Human, Mouse, Rat, Rabbit, Pig, Goat, Horse, Bovine, Guinea Pig, Dog
Predicted	Human, Mouse, Rat, Rabbit, Pig, Chicken, Goat, Bovine, Guinea Pig, Dog
Host	Rabbit
Clonality	Polyclonal
Calculated MW	20kDa KDa

PLDN antibody - middle region - Additional Information**Gene ID** 26258**Alias Symbol** PA, PALLID, HPS9, PLDN**Other Names**

Biogenesis of lysosome-related organelles complex 1 subunit 6, BLOC-1 subunit 6, Pallid protein homolog, Pallidin, Syntaxin 13-interacting protein, BLOC1S6, PA, PLDN

Format

Liquid. Purified antibody supplied in 1x PBS buffer with 0.09% (w/v) sodium azide and 2% sucrose.

Reconstitution & Storage

Add 50 ul of distilled water. Final anti-PLDN antibody concentration is 1 mg/ml in PBS buffer with 2% sucrose. For longer periods of storage, store at 20°C. Avoid repeat freeze-thaw cycles.

Precautions

PLDN antibody - middle region is for research use only and not for use in diagnostic or therapeutic procedures.

PLDN antibody - middle region - Protein Information**Name** BLOC1S6**Synonyms** PA, PLDN**Function**

Component of the BLOC-1 complex, a complex that is required for normal biogenesis of lysosome-related organelles (LRO), such as platelet dense granules and melanosomes. In concert with the AP-3 complex, the BLOC-1 complex is required to target membrane protein cargos into vesicles assembled at cell bodies for delivery into neurites and nerve terminals. The BLOC-1

complex, in association with SNARE proteins, is also proposed to be involved in neurite extension. May play a role in intracellular vesicle trafficking, particularly in the vesicle-docking and fusion process.

Cellular Location

Cytoplasm. Membrane; Peripheral membrane protein. Note=It can exist as a soluble protein as well as a peripheral membrane protein (PubMed:12019270)

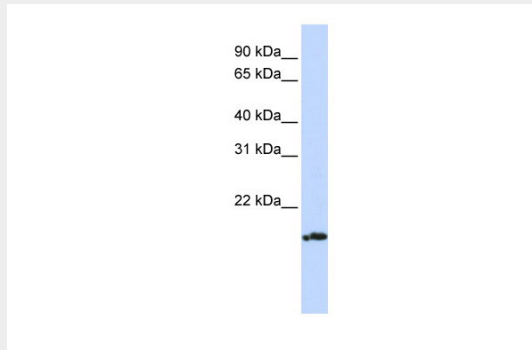
Tissue Location

Widely expressed.

PLDN antibody - middle region - Protocols

Provided below are standard protocols that you may find useful for product applications.

- [Western Blot](#)
- [Blocking Peptides](#)
- [Dot Blot](#)
- [Immunohistochemistry](#)
- [Immunofluorescence](#)
- [Immunoprecipitation](#)
- [Flow Cytometry](#)
- [Cell Culture](#)

PLDN antibody - middle region - Images

WB Suggested Anti-PLDN Antibody Titration: 0.2-1 µg/ml

ELISA Titer: 1:12500

Positive Control: Jurkat cell lysate

PLDN antibody - middle region - References

- Huang L., et al. Nat. Genet. 23:329-332(1999).
Ota T., et al. Nat. Genet. 36:40-45(2004).
Falcon-Perez J.M., et al. Pigment Cell Res. 15:82-86(2002).
Moriyama K., et al. Traffic 3:666-677(2002).
Falcon-Perez J.M., et al. J. Biol. Chem. 277:28191-28199(2002).