

Ldlrap1 Antibody - C-terminal region
Rabbit Polyclonal Antibody
Catalog # AI13774**Specification**

Ldlrap1 Antibody - C-terminal region - Product Information

| | |
|-------------------|----------------------------------------------------------------|
| Application | WB |
| Primary Accession | Q8C142 |
| Other Accession | NM_145554 , NP_663529 |
| Reactivity | Human, Mouse, Rat, Rabbit, Horse, Bovine, Guinea Pig, Dog |
| Predicted | Human, Mouse, Rat, Rabbit, Pig, Horse, Bovine, Guinea Pig, Dog |
| Host | Rabbit |
| Clonality | Polyclonal |
| Calculated MW | 29kDa kDa |

Ldlrap1 Antibody - C-terminal region - Additional Information**Gene ID** 100017**Alias Symbol** AA691260, ARH2, Arh, Arh1, FHCB1, FHCB2**Other Names**

Low density lipoprotein receptor adapter protein 1, Autosomal recessive hypercholesterolemia protein homolog, Ldlrap1, Arh

Format

Liquid. Purified antibody supplied in 1x PBS buffer with 0.09% (w/v) sodium azide and 2% sucrose.

Reconstitution & Storage

Add 50 ul of distilled water. Final anti-Ldlrap1 antibody concentration is 1 mg/ml in PBS buffer with 2% sucrose. For longer periods of storage, store at 20°C. Avoid repeat freeze-thaw cycles.

Precautions

Ldlrap1 Antibody - C-terminal region is for research use only and not for use in diagnostic or therapeutic procedures.

Ldlrap1 Antibody - C-terminal region - Protein Information**Name** Ldlrap1 {ECO:0000312|MGI:MGI:2140175}**Function**

Adapter protein (clathrin-associated sorting protein (CLASP)) required for efficient endocytosis of the LDL receptor (LDLR) in polarized cells such as hepatocytes and lymphocytes, but not in non-polarized cells (fibroblasts). May be required for LDL binding and internalization but not for receptor clustering in coated pits. May facilitate the endocytosis of LDLR and LDLR-LDL complexes from coated pits by stabilizing the interaction between the receptor and the structural components of the pits. May also be involved in the internalization of other LDLR family members. Binds to

phosphoinositides, which regulate clathrin bud assembly at the cell surface. Required for trafficking of LRP2 to the endocytic recycling compartment which is necessary for LRP2 proteolysis, releasing a tail fragment which translocates to the nucleus and mediates transcriptional repression (By similarity).

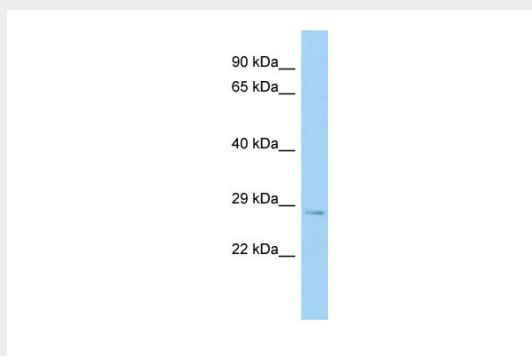
Cellular Location

Cytoplasm.

Ldlrap1 Antibody - C-terminal region - Protocols

Provided below are standard protocols that you may find useful for product applications.

- [Western Blot](#)
- [Blocking Peptides](#)
- [Dot Blot](#)
- [Immunohistochemistry](#)
- [Immunofluorescence](#)
- [Immunoprecipitation](#)
- [Flow Cytometry](#)
- [Cell Culture](#)

Ldlrap1 Antibody - C-terminal region - Images

Host: Rabbit

Target Name: Ldlrap1

Sample Tissue: Mouse Testis lysates

Antibody Dilution: 1.0µg/ml