

**GCET2 antibody - middle region**  
**Rabbit Polyclonal Antibody**  
**Catalog # AI13815****Specification**

---

**GCET2 antibody - middle region - Product Information**

Application	WB
Primary Accession	<a href="#">Q8N6F7</a>
Other Accession	<a href="#">NM_152785</a> , <a href="#">NP_689998</a>
Reactivity	Human
Predicted	Human
Host	Rabbit
Clonality	Polyclonal
Calculated MW	21kDa KDa

**GCET2 antibody - middle region - Additional Information****Gene ID** 257144**Alias Symbol** GCAT2, HGAL, MGC40441, GCET2**Other Names**

Germinal center-associated signaling and motility protein, Germinal center B-cell-expressed transcript 2 protein, Germinal center-associated lymphoma protein, hGAL, GCSAM, GAL, GCET2

**Format**

Liquid. Purified antibody supplied in 1x PBS buffer with 0.09% (w/v) sodium azide and 2% sucrose.

**Reconstitution & Storage**

Add 50 ul of distilled water. Final anti-GCET2 antibody concentration is 1 mg/ml in PBS buffer with 2% sucrose. For longer periods of storage, store at 20°C. Avoid repeat freeze-thaw cycles.

**Precautions**

GCET2 antibody - middle region is for research use only and not for use in diagnostic or therapeutic procedures.

**GCET2 antibody - middle region - Protein Information****Name** GCSAM**Synonyms** GAL, GCET2**Function**

Involved in the negative regulation of lymphocyte motility. It mediates the migration-inhibitory effects of IL6. Serves as a positive regulator of the RhoA signaling pathway. Enhancement of RhoA activation results in inhibition of lymphocyte and lymphoma cell motility by activation of its downstream effector ROCK. Is a regulator of B-cell receptor signaling, that acts through SYK kinase activation.

**Cellular Location**

Cytoplasm. Cell membrane. Note=It relocalizes from the cytoplasm to podosome-like structures upon cell treatment with IL6

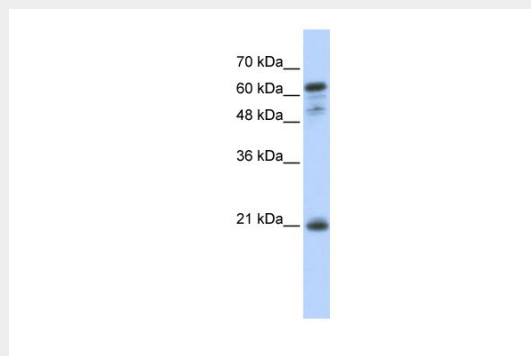
**Tissue Location**

Expressed in diffuse large B-cell lymphoma (DLBCL) and several germinal center (GC)-like lymphoma cell lines (at protein level). Highly expressed in normal GC lymphocytes and GC-derived malignancies. Expressed in thymus and spleen

**GCET2 antibody - middle region - Protocols**

Provided below are standard protocols that you may find useful for product applications.

- [Western Blot](#)
- [Blocking Peptides](#)
- [Dot Blot](#)
- [Immunohistochemistry](#)
- [Immunofluorescence](#)
- [Immunoprecipitation](#)
- [Flow Cytometry](#)
- [Cell Culture](#)

**GCET2 antibody - middle region - Images**

WB Suggested Anti-GCET2 Antibody Titration: 0.2-1 µg/ml

ELISA Titer: 1:62500

Positive Control: Transfected 293T

**GCET2 antibody - middle region - References**

- Pan Z.,et al.Am. J. Pathol. 163:135-144(2003).  
Lossos I.S.,et al.Blood 101:433-440(2003).  
Muzny D.M.,et al.Nature 440:1194-1198(2006).  
Natkunam Y.,et al.Blood 105:3979-3986(2005).  
Lu X.,et al.Blood 110:4268-4277(2007).