

**Cyp4x1 Antibody - C-terminal region**  
**Rabbit Polyclonal Antibody**  
**Catalog # AI13848****Specification**

---

**Cyp4x1 Antibody - C-terminal region - Product Information**

Application	WB
Primary Accession	<a href="#">Q6A152</a>
Other Accession	<a href="#">NM_001003947</a> , <a href="#">NP_001003947</a>
Reactivity	Human, Mouse, Rat, Rabbit, Horse, Guinea Pig, Dog
Predicted	Human, Mouse, Rat, Rabbit, Pig, Horse, Guinea Pig, Dog
Host	Rabbit
Clonality	Polyclonal
Calculated MW	58kDa KDa

**Cyp4x1 Antibody - C-terminal region - Additional Information****Gene ID** 81906**Alias Symbol** **A230025G20, CYP\_a, Cyp4a28-ps**  
**Other Names**  
Cytochrome P450 4X1, 1.14.14.1, CYP1VX1, Cyp4x1**Format**

Liquid. Purified antibody supplied in 1x PBS buffer with 0.09% (w/v) sodium azide and 2% sucrose.

**Reconstitution & Storage**

Add 50 ul of distilled water. Final anti-Cyp4x1 antibody concentration is 1 mg/ml in PBS buffer with 2% sucrose. For longer periods of storage, store at 20°C. Avoid repeat freeze-thaw cycles.

**Precautions**

Cyp4x1 Antibody - C-terminal region is for research use only and not for use in diagnostic or therapeutic procedures.

**Cyp4x1 Antibody - C-terminal region - Protein Information****Name** Cyp4x1 {ECO:0000303|PubMed:16478468, ECO:0000312|MGI:MGI:1932403}**Function**

A cytochrome P450 monooxygenase that selectively catalyzes the epoxidation of the last double bond of the arachidonoyl moiety of anandamide, potentially modulating endocannabinoid signaling. Has no hydroxylase activity toward various fatty acids, steroids and prostaglandins. Mechanistically, uses molecular oxygen inserting one oxygen atom into a substrate, and reducing the second into a water molecule, with two electrons provided by NADPH via cytochrome P450 reductase (CPR; NADPH-ferrihemoprotein reductase).

**Cellular Location**

Endoplasmic reticulum membrane; Single-pass membrane protein. Microsome membrane; Single-pass membrane protein

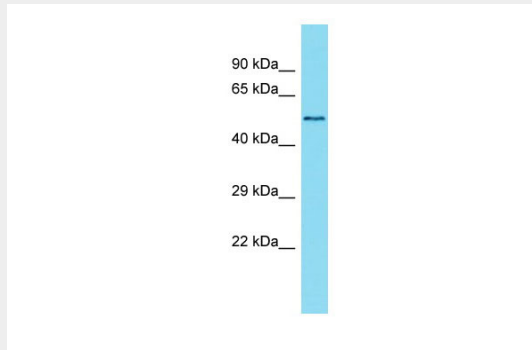
**Tissue Location**

Expressed in brain and aorta. In the brain, expressed in the Purkinje cells of the cerebellum, pyramidal neurons in the dentate gyrus of the hippocampus, cortical forebrain neurons and those of brain stem nuclei (at protein level). In addition to neurons, also expressed in cerebral vascular endothelial cells (at protein level). Also expressed in epithelial cells of the choroid plexus (at protein level). Hardly detectable in heart, lung, kidney and spleen

**Cyp4x1 Antibody - C-terminal region - Protocols**

Provided below are standard protocols that you may find useful for product applications.

- [Western Blot](#)
- [Blocking Peptides](#)
- [Dot Blot](#)
- [Immunohistochemistry](#)
- [Immunofluorescence](#)
- [Immunoprecipitation](#)
- [Flow Cytometry](#)
- [Cell Culture](#)

**Cyp4x1 Antibody - C-terminal region - Images**

Host: Rabbit

Target Name: Cyp4x1

Sample Tissue: Mouse Thymus lysates

Antibody Dilution: 1.0µg/ml

**Cyp4x1 Antibody - C-terminal region - References**

Al-Anizy M., et al. FEBS J. 273:936-947(2006).  
Church D.M., et al. PLoS Biol. 7:E1000112-E1000112(2009).  
Carninci P., et al. Science 309:1559-1563(2005).