

**ZDHHC21 antibody - middle region**  
**Rabbit Polyclonal Antibody**  
**Catalog # AI13852****Specification**

---

**ZDHHC21 antibody - middle region - Product Information**

Application	WB
Primary Accession	<a href="#">Q5RB84</a>
Other Accession	<a href="#">NM_178566</a> , <a href="#">NP_848661</a>
Reactivity	Human, Mouse, Rat, Rabbit, Horse, Bovine, Guinea Pig, Dog
Predicted Host	Rat, Rabbit, Dog
Clonality	Rabbit
Calculated MW	Polyclonal 31kDa KDa

**ZDHHC21 antibody - middle region - Additional Information****Gene ID** 100172477

**Alias Symbol** **DNZ1, DHHC-21, HSPC097, 9130404H11Rik**

**Other Names**  
Probable palmitoyltransferase ZDHHC21, 2.3.1.225, Zinc finger DHHC domain-containing protein 21, DHHC-21, ZDHHC21

**Format**

Liquid. Purified antibody supplied in 1x PBS buffer with 0.09% (w/v) sodium azide and 2% sucrose.

**Reconstitution & Storage**

Add 50 ul of distilled water. Final anti-ZDHHC21 antibody concentration is 1 mg/ml in PBS buffer with 2% sucrose. For longer periods of storage, store at 20°C. Avoid repeat freeze-thaw cycles.

**Precautions**

ZDHHC21 antibody - middle region is for research use only and not for use in diagnostic or therapeutic procedures.

**ZDHHC21 antibody - middle region - Protein Information****Name** ZDHHC21 {ECO:0000250|UniProtKB:Q8IVQ6}**Function**

Palmitoyltransferase that catalyzes the addition of palmitate onto various protein substrates (By similarity). Palmitoylates sex steroid hormone receptors, including ESR1, PGR and AR, thereby regulating their targeting to the plasma membrane. This affects rapid intracellular signaling by sex hormones via ERK and AKT kinases and the generation of cAMP, but does not affect that mediated by their nuclear receptor (By similarity). Palmitoylates FYN, regulates its localization in hair follicles and plays a key role in epidermal homeostasis and hair follicle differentiation. Through the palmitoylation of PLCB1 and the regulation of PLCB1 downstream signaling may indirectly regulate

the function of the endothelial barrier and the adhesion of leukocytes to the endothelium. Has also a palmitoyltransferase activity toward ADRA1D, positively regulating its activity and expression and may thereby play a role in vascular contraction. May also palmitoylate eNOS and LCK (By similarity).

#### Cellular Location

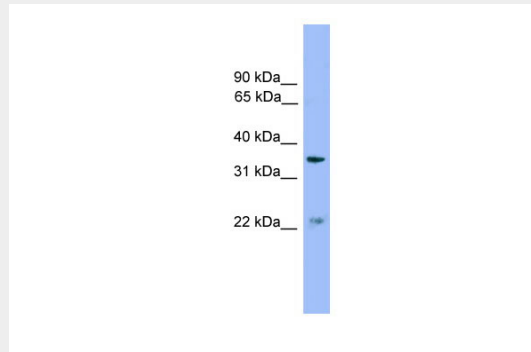
Golgi apparatus membrane {ECO:0000250|UniProtKB:Q8IVQ6}; Multi-pass membrane protein. Golgi apparatus, cis-Golgi network membrane {ECO:0000250|UniProtKB:Q9D270}; Multi-pass membrane protein. Cell membrane {ECO:0000250|UniProtKB:Q8IVQ6}; Multi-pass membrane protein

#### ZDHHC21 antibody - middle region - Protocols

Provided below are standard protocols that you may find useful for product applications.

- [Western Blot](#)
- [Blocking Peptides](#)
- [Dot Blot](#)
- [Immunohistochemistry](#)
- [Immunofluorescence](#)
- [Immunoprecipitation](#)
- [Flow Cytometry](#)
- [Cell Culture](#)

#### ZDHHC21 antibody - middle region - Images



WB Suggested Anti-ZDHHC21 Antibody Titration: 0.2-1 µg/ml  
Positive Control: THP-1 cell lysate