

TEX19 Antibody - middle region
Rabbit Polyclonal Antibody
Catalog # AI13888**Specification**

TEX19 Antibody - middle region - Product Information

Application	WB
Primary Accession	Q8NA77
Other Accession	XP_005256425
Reactivity	Human
Predicted	Human
Host	Rabbit
Clonality	Polyclonal
Calculated MW	18kDa KDa

TEX19 Antibody - middle region - Additional Information**Gene ID** 400629**Alias Symbol** **TEX19,****Other Names**

Testis-expressed sequence 19 protein, TEX19

Format

Liquid. Purified antibody supplied in 1x PBS buffer with 0.09% (w/v) sodium azide and 2% sucrose.

Reconstitution & StorageAdd 50 μ l of distilled water. Final Anti-TEX19 antibody concentration is 1 mg/ml in PBS buffer with 2% sucrose. For longer periods of storage, store at -20°C. Avoid repeat freeze-thaw cycles.**Precautions**

TEX19 Antibody - middle region is for research use only and not for use in diagnostic or therapeutic procedures.

TEX19 Antibody - middle region - Protein Information**Name** TEX19**Function**

Required during spermatogenesis and placenta development, participating in the repression of retrotransposable elements and prevent their mobilization. Collaborates with the Piwi-interacting RNA (piRNA) pathway, which mediates the repression of transposable elements during meiosis by forming complexes composed of piRNAs and Piwi proteins. Interacts with Piwi proteins and directly binds piRNAs, a class of 24 to 30 nucleotide RNAs that are generated by a Dicer- independent mechanism and are primarily derived from transposons and other repeated sequence elements. Also during spermatogenesis, promotes, with UBR2, SPO11-dependent recombination foci to accumulate and drive robust homologous chromosome synapsis (By similarity). Interacts with LINE-1 retrotransposon encoded LIRE1, stimulates LIRE1 polyubiquitination, mediated by UBR2,

and degradation, inhibiting LINE- 1 retrotransposon mobilization (PubMed:28806172).

Cellular Location

Cytoplasm {ECO:0000250|UniProtKB:Q99MV2}. Note=Was initially reported to localize in the nucleus. However, it was later shown to localize in cytoplasm only. Cytoplasmic localization is distinct from the meiotic nuage, also named P granule, a germ-cell- specific organelle required to repress transposon activity during meiosis. {ECO:0000250|UniProtKB:Q99MV2}

Tissue Location

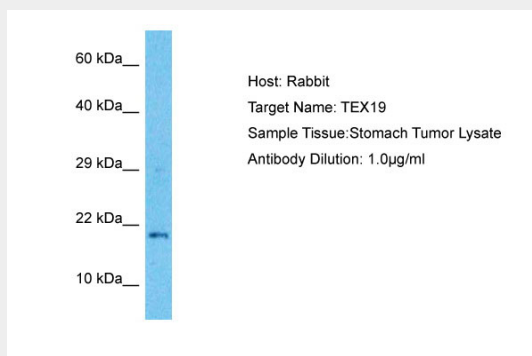
Expressed in testis. Expressed in undifferentiated embryonic stem cells.

TEX19 Antibody - middle region - Protocols

Provided below are standard protocols that you may find useful for product applications.

- [Western Blot](#)
- [Blocking Peptides](#)
- [Dot Blot](#)
- [Immunohistochemistry](#)
- [Immunofluorescence](#)
- [Immunoprecipitation](#)
- [Flow Cytometry](#)
- [Cell Culture](#)

TEX19 Antibody - middle region - Images



Host: Rabbit
Target Name: TEX19
Sample Tissue: Stomach Tumor lysates
Antibody Dilution: 1.0µg/ml

TEX19 Antibody - middle region - References

Ota T.,et al.Nat. Genet. 36:40-45(2004).
Mural R.J.,et al.Submitted (JUL-2005) to the EMBL/GenBank/DDBJ databases.
Kuntz S.,et al.Stem Cells 26:734-744(2008).
Bayne R.A.,et al.J. Androl. 29:389-403(2008).