

EXOC4 antibody - N-terminal region
Rabbit Polyclonal Antibody
Catalog # AI13920

Specification

EXOC4 antibody - N-terminal region - Product Information

Application	WB
Primary Accession	O96A65
Other Accession	NM_001037126 , NP_001032203
Reactivity	Human, Mouse, Rat, Rabbit, Pig, Horse, Bovine, Dog
Predicted	Human, Mouse, Rat, Pig, Chicken, Horse, Bovine
Host	Rabbit
Clonality	Polyclonal
Calculated MW	54kDa KDa

EXOC4 antibody - N-terminal region - Additional Information

Gene ID 60412

Alias Symbol **MGC27170, REC8, SEC8, SEC8L1, Sec8p**
Other Names
Exocyst complex component 4, Exocyst complex component Sec8, EXOC4, KIAA1699, SEC8, SEC8L1

Format

Liquid. Purified antibody supplied in 1x PBS buffer with 0.09% (w/v) sodium azide and 2% sucrose.

Reconstitution & Storage

Add 50 ul of distilled water. Final anti-EXOC4 antibody concentration is 1 mg/ml in PBS buffer with 2% sucrose. For longer periods of storage, store at 20°C. Avoid repeat freeze-thaw cycles.

Precautions

EXOC4 antibody - N-terminal region is for research use only and not for use in diagnostic or therapeutic procedures.

EXOC4 antibody - N-terminal region - Protein Information

Name EXOC4

Synonyms KIAA1699, SEC8, SEC8L1

Function

Component of the exocyst complex involved in the docking of exocytic vesicles with fusion sites on the plasma membrane.

Cellular Location

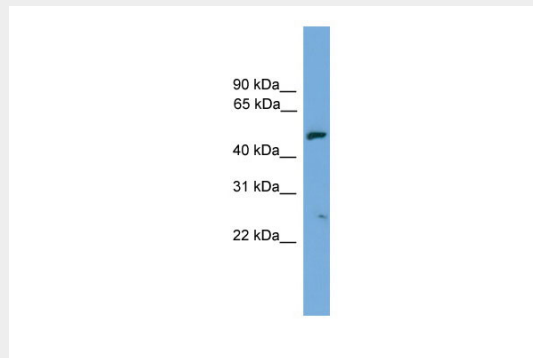
Midbody, Midbody ring. Cell projection {ECO:0000250|UniProtKB:Q62824}. Cytoplasm, cytoskeleton, microtubule organizing center, centrosome Note=Colocalizes with CNTRL/centriolin at the midbody ring (PubMed:16213214). Localizes at the leading edge of migrating cells (By similarity). {ECO:0000250|UniProtKB:Q62824, ECO:0000269|PubMed:16213214}

EXOC4 antibody - N-terminal region - Protocols

Provided below are standard protocols that you may find useful for product applications.

- [Western Blot](#)
- [Blocking Peptides](#)
- [Dot Blot](#)
- [Immunohistochemistry](#)
- [Immunofluorescence](#)
- [Immunoprecipitation](#)
- [Flow Cytometry](#)
- [Cell Culture](#)

EXOC4 antibody - N-terminal region - Images



WB Suggested Anti-EXOC4 Antibody Titration: 0.2-1 μ g/ml
ELISA Titer: 1:312500
Positive Control: Human Placenta

EXOC4 antibody - N-terminal region - References

Sha J.H., et al. Submitted (MAY-2001) to the EMBL/GenBank/DDBJ databases.
Ota T., et al. Nat. Genet. 36:40-45(2004).
Bechtel S., et al. BMC Genomics 8:399-399(2007).
Scherer S.W., et al. Science 300:767-772(2003).
Hillier L.W., et al. Nature 424:157-164(2003).