

Psmc1 antibody - C-terminal region
Rabbit Polyclonal Antibody
Catalog # AI13948**Specification**

Psmc1 antibody - C-terminal region - Product Information

Application	WB
Primary Accession	P62192
Other Accession	NM_008947 , NP_032973
Reactivity	Human, Mouse, Rat, Rabbit, Pig, Horse, Yeast, Bovine, Guinea Pig, Dog
Predicted	Human, Mouse, Pig, Chicken, Horse, Bovine, Guinea Pig, Dog
Host	Rabbit
Clonality	Polyclonal
Calculated MW	48kDa kDa

Psmc1 antibody - C-terminal region - Additional Information**Gene ID** 19179**Alias Symbol** AI325227, P26s4, S4**Other Names**

26S protease regulatory subunit 4, P26s4, 26S proteasome AAA-ATPase subunit RPT2, Proteasome 26S subunit ATPase 1, Psmc1

Format

Liquid. Purified antibody supplied in 1x PBS buffer with 0.09% (w/v) sodium azide and 2% sucrose.

Reconstitution & Storage

Add 50 ul of distilled water. Final anti-Psmc1 antibody concentration is 1 mg/ml in PBS buffer with 2% sucrose. For longer periods of storage, store at 20°C. Avoid repeat freeze-thaw cycles.

Precautions

Psmc1 antibody - C-terminal region is for research use only and not for use in diagnostic or therapeutic procedures.

Psmc1 antibody - C-terminal region - Protein Information**Name** Psmc1**Function**

Component of the 26S proteasome, a multiprotein complex involved in the ATP-dependent degradation of ubiquitinated proteins. This complex plays a key role in the maintenance of protein homeostasis by removing misfolded or damaged proteins, which could impair cellular functions, and by removing proteins whose functions are no longer required. Therefore, the proteasome participates in numerous cellular processes, including cell cycle progression, apoptosis, or DNA damage repair. PSMC1 belongs to the heterohexameric ring of AAA (ATPases associated with

diverse cellular activities) proteins that unfolds ubiquitinated target proteins that are concurrently translocated into a proteolytic chamber and degraded into peptides.

Cellular Location

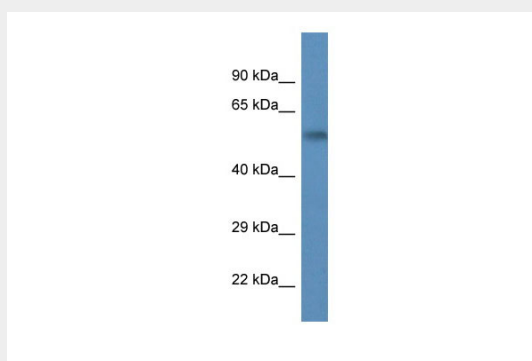
Cytoplasm. Nucleus. Membrane {ECO:0000250|UniProtKB:P62191}; Lipid-anchor {ECO:0000250|UniProtKB:P62191}

Psmc1 antibody - C-terminal region - Protocols

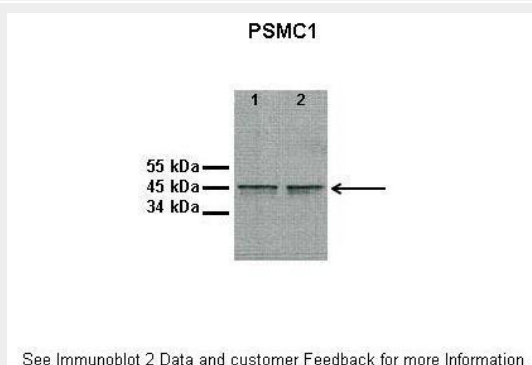
Provided below are standard protocols that you may find useful for product applications.

- [Western Blot](#)
- [Blocking Peptides](#)
- [Dot Blot](#)
- [Immunohistochemistry](#)
- [Immunofluorescence](#)
- [Immunoprecipitation](#)
- [Flow Cytometry](#)
- [Cell Culture](#)

Psmc1 antibody - C-terminal region - Images



WB Suggested Anti-Psmc1 Antibody Titration: 1.0 µg/ml
Positive Control: Mouse Brain



Lanes: 1: 10ug proteasome fraction from C57B1/6J mouse brain, 2: 10ug proteasome fraction from BLAB/C mouse brain

Primary Antibody Dilution: 1:500

Secondary Antibody: Anti-rabbit HRP

Secondary Antibody Dilution: 1:5000

Gene Name: Psmc1

Submitted by: Dr. Scott Wilson, University of Alabama at Birmingham

Psmc1 antibody - C-terminal region - References

- Hoyle J.,et al.Genomics 31:115-118(1996).
Park H.,et al.Proc. Natl. Acad. Sci. U.S.A. 98:11163-11168(2001).
Katiyar S.,et al.Proc. Natl. Acad. Sci. U.S.A. 101:13774-13779(2004).
Li G.,et al.Proc. Natl. Acad. Sci. U.S.A. 102:15809-15814(2005).
Li G.,et al.Proc. Natl. Acad. Sci. U.S.A. 103:1153-1153(2006).