

Twf1 antibody - C-terminal region
Rabbit Polyclonal Antibody
Catalog # AI13950**Specification**

Twf1 antibody - C-terminal region - Product Information

Application	WB
Primary Accession	Q5RJR2
Other Accession	NM_001008521 , NP_001008521
Reactivity	Human, Mouse, Rat, Rabbit, Pig, Horse, Bovine, Guinea Pig, Dog
Predicted	Human, Mouse, Rat, Rabbit, Chicken, Horse, Bovine, Guinea Pig, Dog
Host	Rabbit
Clonality	Polyclonal
Calculated MW	40kDa KDa

Twf1 antibody - C-terminal region - Additional Information**Gene ID** 315265**Alias Symbol** MGC105817, Ptk9
Other Names
Twinfilin-1, Twf1, Ptk9**Format**

Liquid. Purified antibody supplied in 1x PBS buffer with 0.09% (w/v) sodium azide and 2% sucrose.

Reconstitution & Storage

Add 50 ul of distilled water. Final anti-Twf1 antibody concentration is 1 mg/ml in PBS buffer with 2% sucrose. For longer periods of storage, store at 20°C. Avoid repeat freeze-thaw cycles.

Precautions

Twf1 antibody - C-terminal region is for research use only and not for use in diagnostic or therapeutic procedures.

Twf1 antibody - C-terminal region - Protein Information**Name** Twf1**Synonyms** Ptk9**Function**

Actin-binding protein involved in motile and morphological processes. Inhibits actin polymerization, likely by sequestering G-actin. By capping the barbed ends of filaments, it also regulates motility. Seems to play an important role in clathrin-mediated endocytosis and distribution of endocytic organelles (By similarity).

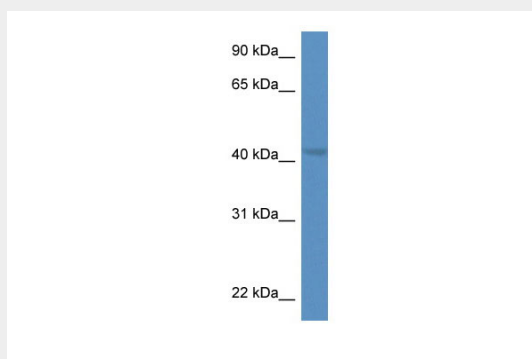
Cellular Location

Cytoplasm. Cytoplasm, cytoskeleton. Note=Diffuse cytoplasmic localization with perinuclear and G-actin-rich cortical actin structures sublocalization. Also found at membrane ruffles and cell-cell contacts (By similarity).

Twf1 antibody - C-terminal region - Protocols

Provided below are standard protocols that you may find useful for product applications.

- [Western Blot](#)
- [Blocking Peptides](#)
- [Dot Blot](#)
- [Immunohistochemistry](#)
- [Immunofluorescence](#)
- [Immunoprecipitation](#)
- [Flow Cytometry](#)
- [Cell Culture](#)

Twf1 antibody - C-terminal region - Images

WB Suggested Anti-Twf1 Antibody Titration: 1.0 µg/ml
Positive Control: Rat Brain