

**Ralb Antibody - middle region**  
**Rabbit Polyclonal Antibody**  
**Catalog # AI13952****Specification**

---

**Ralb Antibody - middle region - Product Information**

Application	WB
Primary Accession	<a href="#">O9JIW9</a>
Other Accession	<a href="#">NM_022327</a> , <a href="#">NP_071722</a>
Reactivity	Human, Mouse, Rat, Rabbit, Pig, Goat, Horse, Bovine, Guinea Pig, Dog
Predicted	Human, Mouse, Rat, Rabbit, Pig, Goat, Horse, Bovine, Guinea Pig, Dog
Host	Rabbit
Clonality	Polyclonal
Calculated MW	23kDa KDa

**Ralb Antibody - middle region - Additional Information****Gene ID** 64143

Alias Symbol	5730472O18Rik
<b>Other Names</b>	
Ras-related protein Ral-B, Ralb	

**Format**

Liquid. Purified antibody supplied in 1x PBS buffer with 0.09% (w/v) sodium azide and 2% sucrose.

**Reconstitution & Storage**

Add 50 ul of distilled water. Final anti-Ralb antibody concentration is 1 mg/ml in PBS buffer with 2% sucrose. For longer periods of storage, store at 20°C. Avoid repeat freeze-thaw cycles.

**Precautions**

Ralb Antibody - middle region is for research use only and not for use in diagnostic or therapeutic procedures.

**Ralb Antibody - middle region - Protein Information****Name** Ralb**Function**

Multifunctional GTPase involved in a variety of cellular processes including gene expression, cell migration, cell proliferation, oncogenic transformation and membrane trafficking. Accomplishes its multiple functions by interacting with distinct downstream effectors. Acts as a GTP sensor for GTP-dependent exocytosis of dense core vesicles (By similarity). Required both to stabilize the assembly of the exocyst complex and to localize functional exocyst complexes to the leading edge of migrating cells (By similarity). Required for suppression of apoptosis (By similarity). In late stages of cytokinesis, upon completion of the bridge formation between dividing cells, mediates

exocyst recruitment to the midbody to drive abscission (By similarity). Involved in ligand-dependent receptor mediated endocytosis of the EGF and insulin receptors (By similarity).

#### Cellular Location

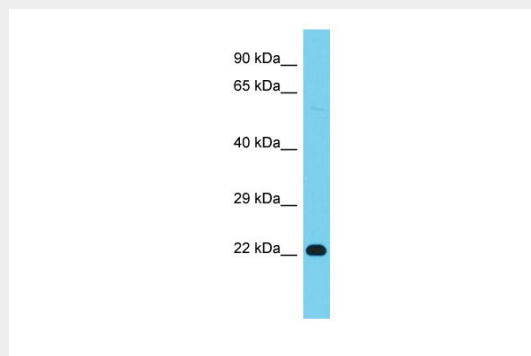
Cell membrane {ECO:0000250|UniProtKB:P11234}; Lipid-anchor {ECO:0000250|UniProtKB:P11234}; Cytoplasmic side {ECO:0000250|UniProtKB:P11234}. Midbody {ECO:0000250|UniProtKB:P11234} Note=During late cytokinesis, enriched at the midbody {ECO:0000250|UniProtKB:P11234}

#### Ralb Antibody - middle region - Protocols

Provided below are standard protocols that you may find useful for product applications.

- [Western Blot](#)
- [Blocking Peptides](#)
- [Dot Blot](#)
- [Immunohistochemistry](#)
- [Immunofluorescence](#)
- [Immunoprecipitation](#)
- [Flow Cytometry](#)
- [Cell Culture](#)

#### Ralb Antibody - middle region - Images



Host: Rabbit  
Target Name: Ralb  
Sample Tissue: Mouse Testis lysates  
Antibody Dilution: 1.0µg/ml

#### Ralb Antibody - middle region - References

Zhao Z., et al. Mech. Dev. 97:201-204(2000).  
Carninci P., et al. Science 309:1559-1563(2005).