

**Rab27b antibody - C-terminal region**  
**Rabbit Polyclonal Antibody**  
**Catalog # AI13963****Specification**

---

**Rab27b antibody - C-terminal region - Product Information**

Application	WB
Primary Accession	<a href="#">Q99P58</a>
Other Accession	<a href="#">NM_030554</a> , <a href="#">NP_085031</a>
Reactivity	Human, Mouse, Rat, Rabbit, Pig, Horse, Bovine, Guinea Pig, Dog
Predicted Host	Mouse, Dog
Clonality	Rabbit
Calculated MW	Polyclonal 24kDa KDa

**Rab27b antibody - C-terminal region - Additional Information****Gene ID** 80718

Alias Symbol	2310021G14Rik, B130064M09Rik
<b>Other Names</b>	
Ras-related protein Rab-27B, Rab27b	

**Format**

Liquid. Purified antibody supplied in 1x PBS buffer with 0.09% (w/v) sodium azide and 2% sucrose.

**Reconstitution & Storage**

Add 50 ul of distilled water. Final anti-Rab27b antibody concentration is 1 mg/ml in PBS buffer with 2% sucrose. For longer periods of storage, store at 20°C. Avoid repeat freeze-thaw cycles.

**Precautions**

Rab27b antibody - C-terminal region is for research use only and not for use in diagnostic or therapeutic procedures.

**Rab27b antibody - C-terminal region - Protein Information****Name** Rab27b**Function**

Small GTPase which cycles between active GTP-bound and inactive GDP-bound states. In its active state, binds to a variety of effector proteins to regulate homeostasis of late endocytic pathway, including endosomal positioning, maturation and secretion (By similarity). Plays a role in NTRK2/TRKB axonal anterograde transport by facilitating the association of NTRK2/TRKB with KLC1 (By similarity). May be involved in targeting uroplakins to urothelial apical membranes (By similarity).

**Cellular Location**

Membrane {ECO:0000250|UniProtKB:O00194}; Lipid- anchor {ECO:0000250|UniProtKB:O00194}.  
Late endosome {ECO:0000250|UniProtKB:O00194}

#### **Tissue Location**

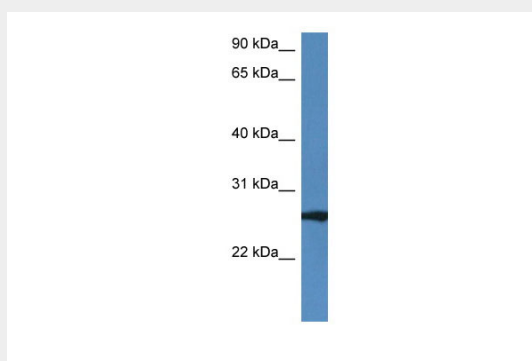
Expressed abundantly in the stomach and is predominantly localized at the apical region of gastric-surface mucus cells. Also expressed in the brain and spleen

#### **Rab27b antibody - C-terminal region - Protocols**

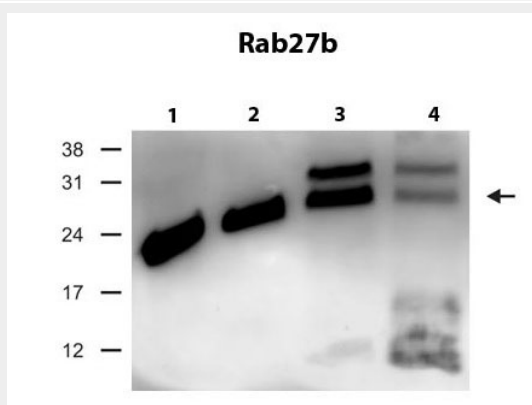
Provided below are standard protocols that you may find useful for product applications.

- [Western Blot](#)
- [Blocking Peptides](#)
- [Dot Blot](#)
- [Immunohistochemistry](#)
- [Immunofluorescence](#)
- [Immunoprecipitation](#)

#### **Rab27b antibody - C-terminal region - Images**



Rab27b antibody - C-terminal region (A113963) validated by WB using Mouse Heart lysate at 1µg/ml.



WB Suggested Anti-Rab27b Antibody Titration: 0.5 µg/ml  
Positive Control: human testis, mouse liver, brain and testis

#### **Rab27b antibody - C-terminal region - References**

Ramalho J.S.,et al.BMC Genet. 2:2-2(2001).  
Chen Y.,et al.Submitted (OCT-2000) to the EMBL/GenBank/DDBJ databases.  
Zhao S.,et al.Endocrinology 143:1817-1824(2002).  
Fukuda M.,et al.J. Biol. Chem. 277:43096-43103(2002).  
Fukuda M.,et al.J. Biol. Chem. 278:15373-15380(2003).