

**Vps36 antibody - N-terminal region**  
**Rabbit Polyclonal Antibody**  
**Catalog # AI14011****Specification**

---

**Vps36 antibody - N-terminal region - Product Information**

Application	WB
Primary Accession	<a href="#">O91XD6</a>
Other Accession	<a href="#">NM_027338</a> , <a href="#">NP_081614</a>
Reactivity	Human, Mouse, Rat, Rabbit, Pig, Horse, Bovine, Guinea Pig, Dog
Predicted	Human, Mouse, Rat, Rabbit, Pig, Chicken, Horse, Bovine, Guinea Pig, Dog
Host	Rabbit
Clonality	Polyclonal
Calculated MW	42kDa KDa

**Vps36 antibody - N-terminal region - Additional Information****Gene ID** 70160**Alias Symbol** **1700010A24Rik, 2210415M20Rik, 2810408E15Rik, Eap45****Other Names**

Vacuolar protein-sorting-associated protein 36, ESCRT-II complex subunit VPS36, Vps36

**Format**

Liquid. Purified antibody supplied in 1x PBS buffer with 0.09% (w/v) sodium azide and 2% sucrose.

**Reconstitution & Storage**

Add 50 ul of distilled water. Final anti-Vps36 antibody concentration is 1 mg/ml in PBS buffer with 2% sucrose. For longer periods of storage, store at 20°C. Avoid repeat freeze-thaw cycles.

**Precautions**

Vps36 antibody - N-terminal region is for research use only and not for use in diagnostic or therapeutic procedures.

**Vps36 antibody - N-terminal region - Protein Information****Name** Vps36**Function**

Component of the ESCRT-II complex (endosomal sorting complex required for transport II), which is required for multivesicular body (MVB) formation and sorting of endosomal cargo proteins into MVBs. The MVB pathway mediates delivery of transmembrane proteins into the lumen of the lysosome for degradation. The ESCRT-II complex is probably involved in the recruitment of the ESCRT-III complex. Its ability to bind ubiquitin probably plays a role in endosomal sorting of ubiquitinated cargo proteins by ESCRT complexes. The ESCRT-II complex may also play a role in

transcription regulation, possibly via its interaction with ELL. Binds phosphoinositides such as PtdIns(3,4,5)P3.

#### **Cellular Location**

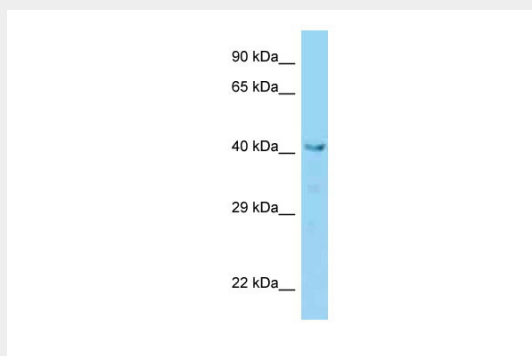
Cytoplasm. Endosome. Late endosome. Membrane Nucleus. Note=Colocalizes with ubiquitinated proteins on late endosomes. Recruited to the endosome membrane to participate in vesicle formation.

#### **Vps36 antibody - N-terminal region - Protocols**

Provided below are standard protocols that you may find useful for product applications.

- [Western Blot](#)
- [Blocking Peptides](#)
- [Dot Blot](#)
- [Immunohistochemistry](#)
- [Immunofluorescence](#)
- [Immunoprecipitation](#)
- [Flow Cytometry](#)
- [Cell Culture](#)

#### **Vps36 antibody - N-terminal region - Images**



WB Suggested Anti-Vps36 Antibody Titration: 1.0 µg/ml  
Positive Control: Mouse Liver

#### **Vps36 antibody - N-terminal region - References**

Carninci P., et al. Science 309:1559-1563(2005).  
Hirano S., et al. Nat. Struct. Mol. Biol. 13:1031-1032(2006).