

Ppp3cb antibody - C-terminal region
Rabbit Polyclonal Antibody
Catalog # AI14137**Specification**

Ppp3cb antibody - C-terminal region - Product Information

Application	WB
Primary Accession	P48453
Other Accession	NM_008914 , NP_032940
Reactivity	Human, Mouse, Rat, Rabbit, Pig, Horse, Bovine, Guinea Pig, Dog
Predicted	Human, Mouse, Rat, Rabbit, Pig, Chicken, Horse, Bovine, Guinea Pig, Dog
Host	Rabbit
Clonality	Polyclonal
Calculated MW	58kDa KDa

Ppp3cb antibody - C-terminal region - Additional Information**Gene ID** 19056**Alias Symbol** **1110063J16Rik, Calnb, CnAbeta, Cnab****Other Names**

Serine/threonine-protein phosphatase 2B catalytic subunit beta isoform, 3.1.3.16, CAM-PRP catalytic subunit, Calmodulin-dependent calcineurin A subunit beta isoform, Ppp3cb, Calnb

Format

Liquid. Purified antibody supplied in 1x PBS buffer with 0.09% (w/v) sodium azide and 2% sucrose.

Reconstitution & Storage

Add 50 ul of distilled water. Final anti-Ppp3cb antibody concentration is 1 mg/ml in PBS buffer with 2% sucrose. For longer periods of storage, store at 20°C. Avoid repeat freeze-thaw cycles.

Precautions

Ppp3cb antibody - C-terminal region is for research use only and not for use in diagnostic or therapeutic procedures.

Ppp3cb antibody - C-terminal region - Protein Information**Name** Ppp3cb**Synonyms** Calnb**Function**

Calcium-dependent, calmodulin-stimulated protein phosphatase which plays an essential role in the transduction of intracellular Ca(2+)-mediated signals (By similarity). Dephosphorylates TFEB in response to lysosomal Ca(2+) release, resulting in TFEB nuclear translocation and stimulation of lysosomal biogenesis (By similarity). Dephosphorylates and activates transcription factor NFATC1

(By similarity). Dephosphorylates and inactivates transcription factor ELK1 (By similarity). Dephosphorylates DARPP32 (By similarity). Negatively regulates MAP3K14/NIK signaling via inhibition of nuclear translocation of the transcription factors RELA and RELB (PubMed:26029823). May play a role in skeletal muscle fiber type specification (PubMed:12773574).

Cellular Location

Cytoplasm {ECO:0000250|UniProtKB:P16298}.

Tissue Location

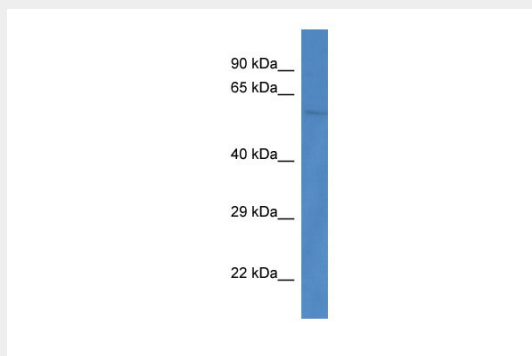
Expressed in kidney, in the thick ascending limb epithelium and in the collecting duct, but not in the distal convoluted tubule (at protein level) (PubMed:25967121, PubMed:15509543). Expressed in the brain and the bicep, tricep, soleus and gastrocnemius muscles (at protein level) (PubMed:12773574). Expressed in the salivary gland (at protein level) (PubMed:21435446). Expressed in hippocampal neuron nuclei and adjacent white matter tracts in the CA1 region of the hippocampus (at protein level) (PubMed:10200317)

Ppp3cb antibody - C-terminal region - Protocols

Provided below are standard protocols that you may find useful for product applications.

- [Western Blot](#)
- [Blocking Peptides](#)
- [Dot Blot](#)
- [Immunohistochemistry](#)
- [Immunofluorescence](#)
- [Immunoprecipitation](#)
- [Flow Cytometry](#)
- [Cell Culture](#)

Ppp3cb antibody - C-terminal region - Images



WB Suggested Anti-Ppp3cb Antibody Titration: 1.0 µg/ml

Positive Control: Mouse Heart

Ppp3cb antibody - C-terminal region - References

Giri P.R., et al. Biochem. Biophys. Res. Commun. 181:252-258(1991).
Gaestel M., et al. J. Biol. Chem. 267:21607-21611(1992).