

PYCR1 antibody - middle region
Rabbit Polyclonal Antibody
Catalog # AI14193

Specification

PYCR1 antibody - middle region - Product Information

Application	WB
Primary Accession	A6NFM2
Other Accession	NM_153824 , NP_722546
Reactivity	Human, Mouse, Rat, Rabbit, Horse, Bovine, Guinea Pig, Dog
Predicted Host	Human, Mouse, Rat, Rabbit, Dog
Clonality	Rabbit
Calculated MW	Polyclonal 33kDa KDa

PYCR1 antibody - middle region - Additional Information

Alias Symbol	P5C, P5CR, PIG45, PP222, PYCR, PRO3, ARCL2B, ARCL3B
--------------	---

Format

Liquid. Purified antibody supplied in 1x PBS buffer with 0.09% (w/v) sodium azide and 2% sucrose.

Reconstitution & Storage

Add 50 ul of distilled water. Final anti-PYCR1 antibody concentration is 1 mg/ml in PBS buffer with 2% sucrose. For longer periods of storage, store at 20°C. Avoid repeat freeze-thaw cycles.

Precautions

PYCR1 antibody - middle region is for research use only and not for use in diagnostic or therapeutic procedures.

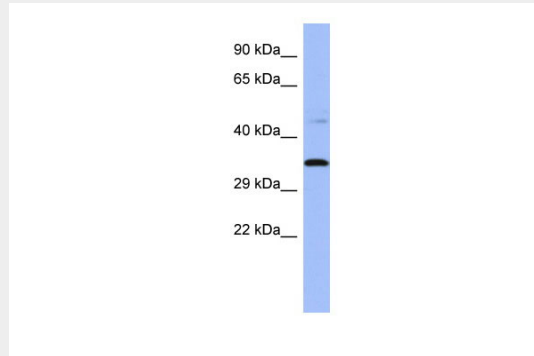
PYCR1 antibody - middle region - Protein Information

PYCR1 antibody - middle region - Protocols

Provided below are standard protocols that you may find useful for product applications.

- [Western Blot](#)
- [Blocking Peptides](#)
- [Dot Blot](#)
- [Immunohistochemistry](#)
- [Immunofluorescence](#)
- [Immunoprecipitation](#)
- [Flow Cytometry](#)
- [Cell Culture](#)

PYCR1 antibody - middle region - Images



WB Suggested Anti-PYCR1 Antibody Titration: 0.2-1 $\mu\text{g/ml}$

ELISA Titer: 1:312500

Positive Control: 721_B cell lysate

PYCR1 is supported by BioGPS gene expression data to be expressed in 721_B



PYCR1 antibody - middle region (AI14193) validated by WB using 293T cells lysate at 1 $\mu\text{g/ml}$. PYCR1 is supported by BioGPS gene expression data to be expressed in HEK293T