

**PSMD12 antibody - middle region**  
**Rabbit Polyclonal Antibody**  
**Catalog # AI14210****Specification**

---

**PSMD12 antibody - middle region - Product Information**

Application	WB
Primary Accession	<a href="#">Q5RBI3</a>
Other Accession	<a href="#">NM_002816</a> , <a href="#">NP_002807</a>
Reactivity	Human, Mouse, Rat, Rabbit, Pig, Horse, Bovine, Guinea Pig, Dog
Predicted Host	Human, Mouse, Rat, Rabbit, Chicken, Dog
Clonality	Rabbit
Calculated MW	Polyclonal 53 KDa

**PSMD12 antibody - middle region - Additional Information****Gene ID** 100172410**Alias Symbol** MGC75406, p55, Rpn5**Other Names**

26S proteasome non-ATPase regulatory subunit 12, 26S proteasome regulatory subunit RPN5, 26S proteasome regulatory subunit p55, PSMD12

**Format**

Liquid. Purified antibody supplied in 1x PBS buffer with 0.09% (w/v) sodium azide and 2% sucrose.

**Reconstitution & Storage**

Add 50 ul of distilled water. Final anti-PSMD12 antibody concentration is 1 mg/ml in PBS buffer with 2% sucrose. For longer periods of storage, store at 20°C. Avoid repeat freeze-thaw cycles.

**Precautions**

PSMD12 antibody - middle region is for research use only and not for use in diagnostic or therapeutic procedures.

**PSMD12 antibody - middle region - Protein Information****Name** PSMD12**Function**

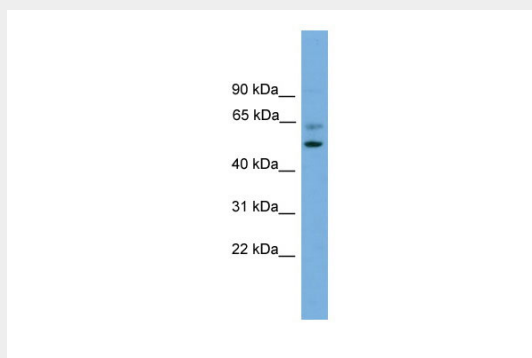
Component of the 26S proteasome, a multiprotein complex involved in the ATP-dependent degradation of ubiquitinated proteins. This complex plays a key role in the maintenance of protein homeostasis by removing misfolded or damaged proteins, which could impair cellular functions, and by removing proteins whose functions are no longer required. Therefore, the proteasome participates in numerous cellular processes, including cell cycle progression, apoptosis, or DNA damage repair.

## PSMD12 antibody - middle region - Protocols

Provided below are standard protocols that you may find useful for product applications.

- [Western Blot](#)
- [Blocking Peptides](#)
- [Dot Blot](#)
- [Immunohistochemistry](#)
- [Immunofluorescence](#)
- [Immunoprecipitation](#)
- [Flow Cytometry](#)
- [Cell Culture](#)

## PSMD12 antibody - middle region - Images



WB Suggested Anti-PSMD12 Antibody Titration: 0.2-1  $\mu$ g/ml

ELISA Titer: 1:62500

Positive Control: Hela cell lysate

PSMD12 is supported by BioGPS gene expression data to be expressed in HeLa