

Mrip Antibody - middle region
Rabbit Polyclonal Antibody
Catalog # AI14213**Specification**

Mrip Antibody - middle region - Product Information

Application	WB
Primary Accession	Q9ERE6
Other Accession	NM_053814 , NP_446266
Reactivity	Human, Mouse, Rat, Rabbit, Pig, Horse, Bovine, Guinea Pig, Dog
Predicted	Human, Mouse, Rat, Rabbit, Pig, Horse, Bovine, Guinea Pig, Dog
Host	Rabbit
Clonality	Polyclonal
Calculated MW	113kDa KDa

Mrip Antibody - middle region - Additional Information**Gene ID** 116504**Alias Symbol** M-rip, Mrip, Rhoip3, p116Rip**Other Names**

Myosin phosphatase Rho-interacting protein, Rho-interacting protein 3, RIP3, p116Rip, Mrip, Mrip, Rhoip3

Format

Liquid. Purified antibody supplied in 1x PBS buffer with 0.09% (w/v) sodium azide and 2% sucrose.

Reconstitution & Storage

Add 50 ul of distilled water. Final anti-Mrip antibody concentration is 1 mg/ml in PBS buffer with 2% sucrose. For longer periods of storage, store at 20°C. Avoid repeat freeze-thaw cycles.

Precautions

Mrip Antibody - middle region is for research use only and not for use in diagnostic or therapeutic procedures.

Mrip Antibody - middle region - Protein Information**Name** Mrip**Synonyms** Mrip, Rhoip3**Function**

Targets myosin phosphatase to the actin cytoskeleton. Required for the regulation of the actin cytoskeleton by RhoA and ROCK1. Depletion leads to an increased number of stress fibers in smooth muscle cells through stabilization of actin fibers by phosphorylated myosin. Overexpression of MRIP as well as its F-actin- binding region leads to disassembly of stress fibers

in neuronal cells (By similarity).

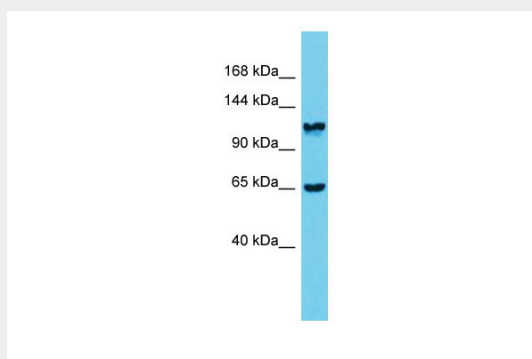
Cellular Location

Cytoplasm, cytoskeleton. Note=Colocalizes with F-actin.

Mprip Antibody - middle region - Protocols

Provided below are standard protocols that you may find useful for product applications.

- [Western Blot](#)
- [Blocking Peptides](#)
- [Dot Blot](#)
- [Immunohistochemistry](#)
- [Immunofluorescence](#)
- [Immunoprecipitation](#)
- [Flow Cytometry](#)
- [Cell Culture](#)

Mprip Antibody - middle region - Images

Host: Rabbit

Target Name: Mprip

Sample Tissue: Rat Stomach lysates

Antibody Dilution: 1.0µg/ml

Mprip Antibody - middle region - References

Lanson N.A. Jr., et al. Submitted (OCT-2000) to the EMBL/GenBank/DDBJ databases.