

POT1 antibody - middle region
Rabbit Polyclonal Antibody
Catalog # AI14282**Specification**

POT1 antibody - middle region - Product Information

Application	WB
Primary Accession	O9NUX5
Other Accession	NM_015450 , NP_056265
Reactivity	Human, Mouse, Rat, Rabbit, Pig, Horse, Bovine, Guinea Pig, Dog
Predicted	Human, Mouse, Pig, Horse, Bovine, Guinea Pig, Dog
Host	Rabbit
Clonality	Polyclonal
Calculated MW	70kDa KDa

POT1 antibody - middle region - Additional Information**Gene ID** 25913**Alias Symbol** DKFZP586D211, hPot1, HPOT1**Other Names**

Protection of telomeres protein 1, hPot1, POT1-like telomere end-binding protein, POT1

Format

Liquid. Purified antibody supplied in 1x PBS buffer with 0.09% (w/v) sodium azide and 2% sucrose.

Reconstitution & Storage

Add 50 ul of distilled water. Final anti-POT1 antibody concentration is 1 mg/ml in PBS buffer with 2% sucrose. For longer periods of storage, store at 20°C. Avoid repeat freeze-thaw cycles.

Precautions

POT1 antibody - middle region is for research use only and not for use in diagnostic or therapeutic procedures.

POT1 antibody - middle region - Protein Information**Name** POT1**Function**

Component of the telomerase ribonucleoprotein (RNP) complex that is essential for the replication of chromosome termini. Is a component of the double-stranded telomeric DNA-binding TRF1 complex which is involved in the regulation of telomere length by cis- inhibition of telomerase. Also acts as a single-stranded telomeric DNA- binding protein and thus may act as a downstream effector of the TRF1 complex and may transduce information about telomere maintenance and/or length to the telomere terminus. Component of the shelterin complex (telosome) that is involved in the regulation of telomere length and protection. Shelterin associates with arrays of

double-stranded TTAGGG repeats added by telomerase and protects chromosome ends; without its protective activity, telomeres are no longer hidden from the DNA damage surveillance and chromosome ends are inappropriately processed by DNA repair pathways. Binds to two or more telomeric single-stranded 5'-TTAGGG-3' repeats (G-strand) and with high specificity to a minimal telomeric single-stranded 5'-TAGGGTTAG-3' sequence. Binds telomeric single-stranded sequences internally or at proximity of a 3'-end. Its activity is TERT dependent but it does not increase TERT activity by itself. In contrast, the ACD-POT1 heterodimer enhances telomere elongation by increasing telomerase processivity.

Cellular Location

Nucleus. Chromosome, telomere. Note=Colocalizes with telomeric DNA

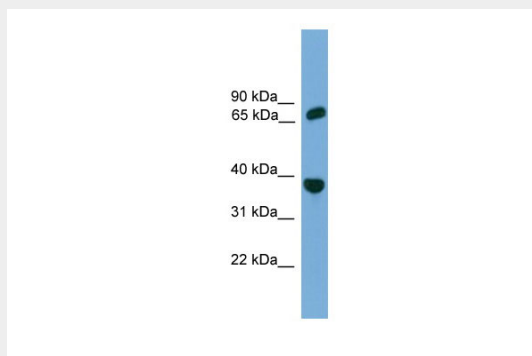
Tissue Location

Ubiquitous.

POT1 antibody - middle region - Protocols

Provided below are standard protocols that you may find useful for product applications.

- [Western Blot](#)
- [Blocking Peptides](#)
- [Dot Blot](#)
- [Immunohistochemistry](#)
- [Immunofluorescence](#)
- [Immunoprecipitation](#)
- [Flow Cytometry](#)
- [Cell Culture](#)

POT1 antibody - middle region - Images

WB Suggested Anti-POT1 Antibody Titration: 0.2-1 µg/ml

ELISA Titer: 1:1562500

Positive Control: THP-1 cell lysate

POT1 antibody - middle region - References

Baumann P., et al. Science 292:1171-1175(2001).
Baumann P., et al. Mol. Cell. Biol. 22:8079-8087(2002).
Ota T., et al. Nat. Genet. 36:40-45(2004).
Hillier L.W., et al. Nature 424:157-164(2003).
Mural R.J., et al. Submitted (JUL-2005) to the EMBL/GenBank/DDBJ databases.