

CAPS antibody - N-terminal region
Rabbit Polyclonal Antibody
Catalog # AI14291**Specification**

CAPS antibody - N-terminal region - Product Information

Application	WB
Primary Accession	Q13938
Other Accession	NM_004058 , NP_004049
Reactivity	Human, Rat, Rabbit, Pig, Horse
Predicted	Human
Host	Rabbit
Clonality	Polyclonal
Calculated MW	21kDa KDa

CAPS antibody - N-terminal region - Additional Information**Gene ID** 828**Alias Symbol** CAPS1, MGC126562
Other Names
Calcyphosin, Calcyphosine, CAPS**Format**

Liquid. Purified antibody supplied in 1x PBS buffer with 0.09% (w/v) sodium azide and 2% sucrose.

Reconstitution & Storage

Add 50 ul of distilled water. Final anti-CAPS antibody concentration is 1 mg/ml in PBS buffer with 2% sucrose. For longer periods of storage, store at 20°C. Avoid repeat freeze-thaw cycles.

Precautions

CAPS antibody - N-terminal region is for research use only and not for use in diagnostic or therapeutic procedures.

CAPS antibody - N-terminal region - Protein Information**Name** CAPS {ECO:0000303|PubMed:28397838, ECO:0000312|HGNC:HGNC:1487}**Function**

Calcium-binding protein. May play a role in cellular signaling events (Potential).

Cellular Location

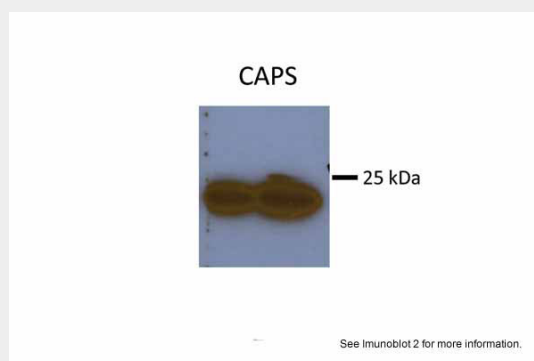
Cytoplasm.

CAPS antibody - N-terminal region - Protocols

Provided below are standard protocols that you may find useful for product applications.

- [Western Blot](#)
- [Blocking Peptides](#)
- [Dot Blot](#)
- [Immunohistochemistry](#)
- [Immunofluorescence](#)
- [Immunoprecipitation](#)
- [Flow Cytometry](#)
- [Cell Culture](#)

CAPS antibody - N-terminal region - Images



Sample Type: Huh7 HepG2 (50ug)
Primary Antibody Dilution:1:500 Image
Submitted by: Partha Kasturi University of Kansas Medical Center

CAPS antibody - N-terminal region - References

el Housni H.,et al.Biochim. Biophys. Acta 1352:249-252(1997).
Grimwood J.,et al.Nature 428:529-535(2004).
Dong H.,et al.J. Mol. Biol. 383:455-464(2008).