

**Capzb Antibody - C-terminal region**  
**Rabbit Polyclonal Antibody**  
**Catalog # AI14292****Specification**

---

**Capzb Antibody - C-terminal region - Product Information**

Application	WB
Primary Accession	<a href="#">Q5XI32</a>
Other Accession	<a href="#">NM_001005903</a> , <a href="#">NP_001005903</a>
Reactivity	Human, Mouse, Rat, Rabbit, Pig, Horse, Bovine, Guinea Pig, Dog
Predicted	Human, Mouse, Rat, Rabbit, Pig, Horse, Bovine, Guinea Pig, Dog
Host	Rabbit
Clonality	Polyclonal
Calculated MW	29kDa KDa

**Capzb Antibody - C-terminal region - Additional Information****Gene ID** 298584**Alias Symbol** **MGC95097****Other Names**

F-actin-capping protein subunit beta, CapZ beta, Capzb

**Format**

Liquid. Purified antibody supplied in 1x PBS buffer with 0.09% (w/v) sodium azide and 2% sucrose.

**Reconstitution & Storage**

Add 50 ul of distilled water. Final anti-Capzb antibody concentration is 1 mg/ml in PBS buffer with 2% sucrose. For longer periods of storage, store at 20°C. Avoid repeat freeze-thaw cycles.

**Precautions**

Capzb Antibody - C-terminal region is for research use only and not for use in diagnostic or therapeutic procedures.

**Capzb Antibody - C-terminal region - Protein Information****Name** Capzb**Function**

F-actin-capping proteins bind in a Ca(2+)-independent manner to the fast growing ends of actin filaments (barbed end) thereby blocking the exchange of subunits at these ends. Unlike other capping proteins (such as gelsolin and severin), these proteins do not sever actin filaments. Plays a role in the regulation of cell morphology and cytoskeletal organization (By similarity). Forms, with CAPZB, the barbed end of the fast growing ends of actin filaments in the dynactin complex and stabilizes dynactin structure. The dynactin multiprotein complex activates the molecular motor dynein for ultra-processive transport along microtubules (By similarity).

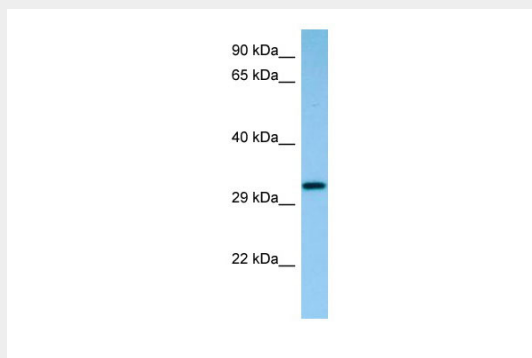
**Cellular Location**

Cytoplasm, cytoskeleton. Cytoplasm, myofibril, sarcomere

**Capzb Antibody - C-terminal region - Protocols**

Provided below are standard protocols that you may find useful for product applications.

- [Western Blot](#)
- [Blocking Peptides](#)
- [Dot Blot](#)
- [Immunohistochemistry](#)
- [Immunofluorescence](#)
- [Immunoprecipitation](#)
- [Flow Cytometry](#)
- [Cell Culture](#)

**Capzb Antibody - C-terminal region - Images**

WB Suggested Anti-Capzb Antibody Titration: 1.0 µg/ml  
Positive Control: Rat Small Intestine

**Capzb Antibody - C-terminal region - References**

Lubec G., et al. Submitted (APR-2007) to UniProtKB.  
Maurya D.K., et al. Proteomics 9:2593-2599(2009).