

**Cxxc5 Antibody - N-terminal region**  
**Rabbit Polyclonal Antibody**  
**Catalog # AI14325****Specification**

---

**Cxxc5 Antibody - N-terminal region - Product Information**

Application	WB
Primary Accession	<a href="#">O91WA4</a>
Other Accession	<a href="#">NM_133687</a> , <a href="#">NP_598448</a>
Reactivity	Human, Mouse, Rat, Horse, Guinea Pig
Predicted	Human, Mouse, Rat, Pig, Horse, Guinea Pig
Host	Rabbit
Clonality	Polyclonal
Calculated MW	33kDa KDa

**Cxxc5 Antibody - N-terminal region - Additional Information****Gene ID** 67393**Alias Symbol** 4930415K17Rik**Other Names**

CXXC-type zinc finger protein 5, Cxxc5

**Format**

Liquid. Purified antibody supplied in 1x PBS buffer with 0.09% (w/v) sodium azide and 2% sucrose.

**Reconstitution & Storage**

Add 50 ul of distilled water. Final anti-Cxxc5 antibody concentration is 1 mg/ml in PBS buffer with 2% sucrose. For longer periods of storage, store at 20°C. Avoid repeat freeze-thaw cycles.

**Precautions**

Cxxc5 Antibody - N-terminal region is for research use only and not for use in diagnostic or therapeutic procedures.

**Cxxc5 Antibody - N-terminal region - Protein Information****Name** Cxxc5**Function**

May indirectly participate in activation of the NF-kappa-B and MAPK pathways. Acts as a mediator of BMP4-mediated modulation of canonical Wnt signaling activity in neural stem cells. Required for DNA damage-induced ATM phosphorylation, p53 activation and cell cycle arrest. Involved in myelopoiesis (By similarity). Binds to the oxygen responsive element of COX4I2 and represses its transcription under hypoxia conditions (4% oxygen), as well as normoxia conditions (20% oxygen). May repress COX4I2 transactivation induced by CHCHD2 and RBPJ (By similarity). Binds preferentially to DNA containing cytidine-phosphate-guanosine (CpG) dinucleotides over CpH (H=A, T, and C), hemimethylated-CpG and hemimethylated-hydroxymethyl-CpG (By similarity).

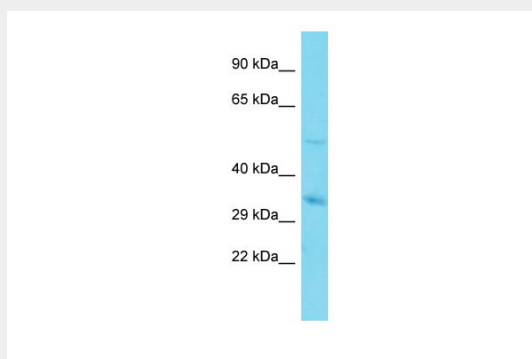
**Cellular Location**

Nucleus {ECO:0000250|UniProtKB:Q5XIQ3}. Cytoplasm {ECO:0000250|UniProtKB:Q5XIQ3}.  
Note=Colocalizes with DVL1 in large bodies localized just outside the nuclear membrane  
{ECO:0000250|UniProtKB:Q5XIQ3}

**Cxxc5 Antibody - N-terminal region - Protocols**

Provided below are standard protocols that you may find useful for product applications.

- [Western Blot](#)
- [Blocking Peptides](#)
- [Dot Blot](#)
- [Immunohistochemistry](#)
- [Immunofluorescence](#)
- [Immunoprecipitation](#)
- [Flow Cytometry](#)
- [Cell Culture](#)

**Cxxc5 Antibody - N-terminal region - Images**

Host: Rabbit  
Target Name: Cxxc5  
Sample Tissue: Mouse Heart lysates  
Antibody Dilution: 1.0µg/ml

**Cxxc5 Antibody - N-terminal region - References**

Carninci P., et al. Science 309:1559-1563(2005).  
Andersson T., et al. J. Biol. Chem. 284:3672-3681(2009).