

Srpx antibody - C-terminal region
Rabbit Polyclonal Antibody
Catalog # AI14345

Specification

Srpx antibody - C-terminal region - Product Information

Application	WB
Primary Accession	O9R0M3
Other Accession	NM_016911 , NP_058607
Reactivity	Human, Mouse, Rat, Rabbit, Pig, Horse, Bovine, Guinea Pig, Dog
Predicted	Human, Mouse, Rat, Rabbit, Pig, Chicken, Horse, Bovine, Guinea Pig, Dog
Host	Rabbit
Clonality	Polyclonal
Calculated MW	51kDa KDa

Srpx antibody - C-terminal region - Additional Information

Gene ID 51795

Alias Symbol [drs](#), [drs-1](#), [drs-2](#), [mDRS-1](#), [mDRS-2](#)

Other Names

Sushi-repeat-containing protein SRPX, DRS protein, Srpx

Format

Liquid. Purified antibody supplied in 1x PBS buffer with 0.09% (w/v) sodium azide and 2% sucrose.

Reconstitution & Storage

Add 50 ul of distilled water. Final anti-Srpx antibody concentration is 1 mg/ml in PBS buffer with 2% sucrose. For longer periods of storage, store at 20°C. Avoid repeat freeze-thaw cycles.

Precautions

Srpx antibody - C-terminal region is for research use only and not for use in diagnostic or therapeutic procedures.

Srpx antibody - C-terminal region - Protein Information

Name Srpx

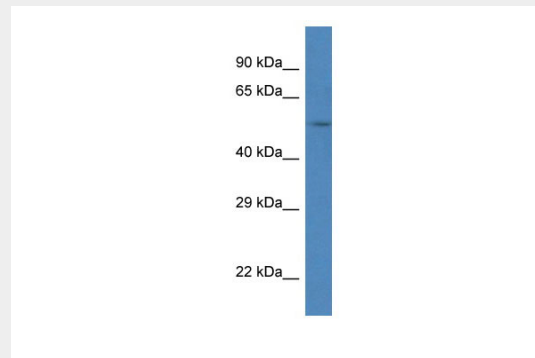
Srpx antibody - C-terminal region - Protocols

Provided below are standard protocols that you may find useful for product applications.

- [Western Blot](#)
- [Blocking Peptides](#)

- [Dot Blot](#)
- [Immunohistochemistry](#)
- [Immunofluorescence](#)
- [Immunoprecipitation](#)
- [Flow Cytometry](#)
- [Cell Culture](#)

Srpx antibody - C-terminal region - Images



WB Suggested Anti-Srpx Antibody Titration: 1.0 µg/ml
Positive Control: Mouse Liver

Srpx antibody - C-terminal region - References

Inoue H., et al. Submitted (MAY-1999) to the EMBL/GenBank/DDBJ databases.
Carninci P., et al. Science 309:1559-1563(2005).
Church D.M., et al. PLoS Biol. 7:E1000112-E1000112(2009).