

Casp2 Antibody - middle region
Rabbit Polyclonal Antibody
Catalog # AI14347**Specification**

Casp2 Antibody - middle region - Product Information

Application	WB
Primary Accession	P29594
Other Accession	NM_007610 , NP_031636
Reactivity	Human, Mouse, Rat, Rabbit, Pig, Horse, Bovine, Guinea Pig, Dog
Predicted	Human, Mouse, Rat, Rabbit, Pig, Horse, Bovine, Guinea Pig, Dog
Host	Rabbit
Clonality	Polyclonal
Calculated MW	51kDa KDa

Casp2 Antibody - middle region - Additional Information**Gene ID** 12366**Alias Symbol** Caspase-2, ICH-1, Nedd2**Other Names**

Caspase-2, CASP-2, 3.4.22.55, Neural precursor cell expressed developmentally down-regulated protein 2, NEDD-2, Protease ICH-1, Caspase-2 subunit p18, Caspase-2 subunit p13, Caspase-2 subunit p12, Casp2, Ich1, Nedd-2, Nedd2

Format

Liquid. Purified antibody supplied in 1x PBS buffer with 0.09% (w/v) sodium azide and 2% sucrose.

Reconstitution & Storage

Add 50 ul of distilled water. Final anti-Casp2 antibody concentration is 1 mg/ml in PBS buffer with 2% sucrose. For longer periods of storage, store at 20°C. Avoid repeat freeze-thaw cycles.

Precautions

Casp2 Antibody - middle region is for research use only and not for use in diagnostic or therapeutic procedures.

Casp2 Antibody - middle region - Protein Information**Name** Casp2**Synonyms** Ich1, Nedd-2, Nedd2**Function**

Involved in the activation cascade of caspases responsible for apoptosis execution. Might function by either activating some proteins required for cell death or inactivating proteins necessary for cell survival (PubMed:

target="_blank">7958843). Associates with PIDD1 and CRADD to form the PIDDosome, a complex that activates CASP2 and triggers apoptosis in response to genotoxic stress (By similarity).

Tissue Location

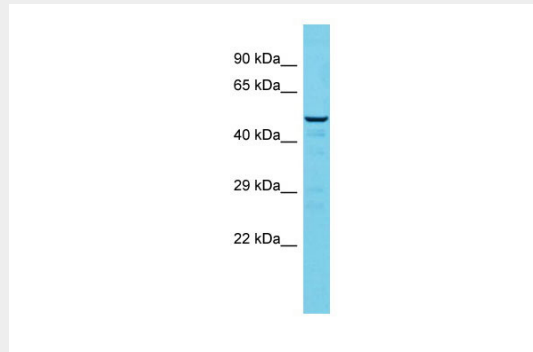
High level expression seen in the embryonic CNS, liver, lung, kidney, small intestine, and hair follicles of vibrissae Moderate expression seen in the skin, oral mucosa, skeletal muscle, submandibular gland and thymus. In the adult, it is highly expressed in spleen, lung and kidney. Moderately in the brain, heart, testis, liver Low levels in the thymus, skeletal muscle, ovary and gut

Casp2 Antibody - middle region - Protocols

Provided below are standard protocols that you may find useful for product applications.

- [Western Blot](#)
- [Blocking Peptides](#)
- [Dot Blot](#)
- [Immunohistochemistry](#)
- [Immunofluorescence](#)
- [Immunoprecipitation](#)
- [Flow Cytometry](#)
- [Cell Culture](#)

Casp2 Antibody - middle region - Images



Host: Rabbit
Target Name: Casp2
Sample Tissue: Mouse Testis lysates
Antibody Dilution: 1.0µg/ml

Casp2 Antibody - middle region - References

Kumar S., et al. Genes Dev. 8:1613-1626(1994).
van de Craen M., et al. FEBS Lett. 403:61-69(1997).
Carninci P., et al. Science 309:1559-1563(2005).
Kumar S., et al. Biochem. Biophys. Res. Commun. 185:1155-1161(1992).