

TIMP3 antibody - middle region
Rabbit Polyclonal Antibody
Catalog # AI14365**Specification**

TIMP3 antibody - middle region - Product Information

Application	WB
Primary Accession	P48032
Other Accession	NM_000362 , NP_000353
Reactivity	Human, Mouse, Rat, Rabbit, Pig, Sheep, Horse, Bovine, Guinea Pig, Dog
Predicted	Human, Mouse, Rat, Rabbit, Chicken, Sheep, Horse, Bovine, Dog
Host	Rabbit
Clonality	Polyclonal
Calculated MW	22kDa KDa

TIMP3 antibody - middle region - Additional Information

Alias Symbol	HSMRK222, K222, K222TA2, SFD
Other Names	
Metalloproteinase inhibitor 3, Tissue inhibitor of metalloproteinases 3, TIMP-3, Timp3, Timp-3	

Format

Liquid. Purified antibody supplied in 1x PBS buffer with 0.09% (w/v) sodium azide and 2% sucrose.

Reconstitution & Storage

Add 50 ul of distilled water. Final anti-TIMP3 antibody concentration is 1 mg/ml in PBS buffer with 2% sucrose. For longer periods of storage, store at 20°C. Avoid repeat freeze-thaw cycles.

Precautions

TIMP3 antibody - middle region is for research use only and not for use in diagnostic or therapeutic procedures.

TIMP3 antibody - middle region - Protein Information

Name Timp3

Synonyms Timp-3

Function

Mediates a variety of processes including matrix regulation and turnover, inflammation, and angiogenesis, through reversible inhibition of zinc protease superfamily enzymes, primarily matrix metalloproteinases (MMPs). Regulates extracellular matrix (ECM) remodeling through inhibition of matrix metalloproteinases (MMP) including MMP-1, MMP-2, MMP-3, MMP-7, MMP-9, MMP-13, MMP-14 and MMP-15. Additionally, modulates the processing of amyloid precursor protein (APP) and apolipoprotein E receptor ApoER2 by inhibiting two alpha- secretases ADAM10 and ADAM17. Functions as a tumor suppressor and a potent inhibitor of angiogenesis. Exerts its anti-angiogenic

effect by directly interacting with vascular endothelial growth factor (VEGF) receptor-2/KDR, preventing its binding to the VEGFA ligand. Selectively induces apoptosis in angiogenic endothelial cells through a caspase- independent cell death pathway. Mechanistically, inhibits matrix- induced focal adhesion kinase PTK2 tyrosine phosphorylation and association with paxillin/PXN and disrupts the incorporation of ITGB3, PTK2 and PXN into focal adhesion contacts on the matrix.

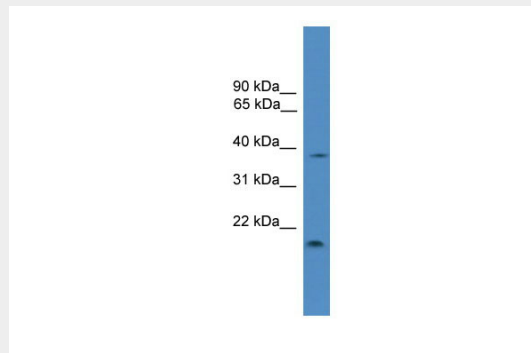
Cellular Location

Secreted, extracellular space, extracellular matrix {ECO:0000250|UniProtKB:P35625}

TIMP3 antibody - middle region - Protocols

Provided below are standard protocols that you may find useful for product applications.

- [Western Blot](#)
- [Blocking Peptides](#)
- [Dot Blot](#)
- [Immunohistochemistry](#)
- [Immunofluorescence](#)
- [Immunoprecipitation](#)
- [Flow Cytometry](#)
- [Cell Culture](#)

TIMP3 antibody - middle region - Images

WB Suggested Anti-TIMP3 Antibody Titration: 0.2-1 µg/ml

ELISA Titer: 1:1562500

Positive Control: MCF7 cell lysate

TIMP3 antibody - middle region - References

Wu I., et al. Gene 168:243-246(1996).