

**Uchl3 Antibody - middle region**  
**Rabbit Polyclonal Antibody**  
**Catalog # AI14379****Specification**

---

**Uchl3 Antibody - middle region - Product Information**

Application	WB
Primary Accession	<a href="#">O9JKB1</a>
Other Accession	<a href="#">NM_016723</a> , <a href="#">NP_057932</a>
Reactivity	Human, Mouse, Rat, Rabbit, Pig, Horse, Yeast, Bovine, Guinea Pig, Dog
Predicted	Human, Mouse, Rat, Rabbit, Pig, Horse, Yeast, Bovine, Guinea Pig, Dog
Host	Rabbit
Clonality	Polyclonal
Calculated MW	26kDa KDa

**Uchl3 Antibody - middle region - Additional Information****Gene ID** 50933**Other Names**

Ubiquitin carboxyl-terminal hydrolase isozyme L3, UCH-L3, 3.4.19.12, Ubiquitin thioesterase L3, Uchl3

**Format**

Liquid. Purified antibody supplied in 1x PBS buffer with 0.09% (w/v) sodium azide and 2% sucrose.

**Reconstitution & Storage**

Add 50 ul of distilled water. Final anti-Uchl3 antibody concentration is 1 mg/ml in PBS buffer with 2% sucrose. For longer periods of storage, store at 20°C. Avoid repeat freeze-thaw cycles.

**Precautions**

Uchl3 Antibody - middle region is for research use only and not for use in diagnostic or therapeutic procedures.

**Uchl3 Antibody - middle region - Protein Information****Name** Uchl3**Function**

Deubiquitinating enzyme (DUB) that controls levels of cellular ubiquitin through processing of ubiquitin precursors and ubiquitinated proteins. Thiol protease that recognizes and hydrolyzes a peptide bond at the C-terminal glycine of either ubiquitin or NEDD8. Has a 10-fold preference for Arg and Lys at position P3'', and exhibits a preference towards 'Lys-48'-linked ubiquitin chains. Deubiquitinates ENAC in apical compartments, thereby regulating apical membrane recycling. Indirectly increases the phosphorylation of IGFIR, AKT and FOXO1 and promotes insulin-signaling and insulin-induced adipogenesis. Required for stress-response retinal, skeletal muscle and germ

cell maintenance. May be involved in working memory. Can hydrolyze UBB(+1), a mutated form of ubiquitin which is not effectively degraded by the proteasome.

**Cellular Location**

Cytoplasm

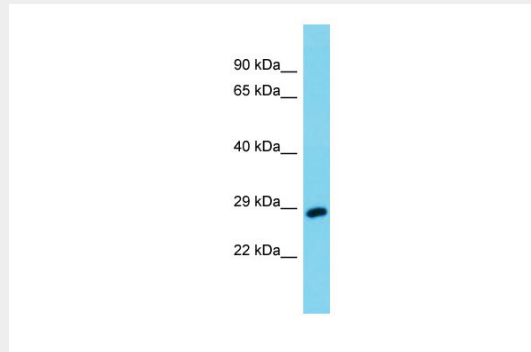
**Tissue Location**

Ubiquitously expressed, with highest levels in brain, liver, heart, thymus, kidney and testis. Highly expressed in the cauda epididymidis, in meiotic pachytene spermatocytes and post-meiotic spermatids. In the retina, enriched in the photoreceptor inner segment

**Uchl3 Antibody - middle region - Protocols**

Provided below are standard protocols that you may find useful for product applications.

- [Western Blot](#)
- [Blocking Peptides](#)
- [Dot Blot](#)
- [Immunohistochemistry](#)
- [Immunofluorescence](#)
- [Immunoprecipitation](#)
- [Flow Cytometry](#)
- [Cell Culture](#)

**Uchl3 Antibody - middle region - Images**

Host: Rabbit

Target Name: Uchl3

Sample Tissue: Mouse Testis lysates

Antibody Dilution: 1.0µg/ml

**Uchl3 Antibody - middle region - References**

Kurihara L.J., et al. Mol. Cell. Biol. 20:2498-2504(2000).  
Osawa Y., et al. Biochem. Biophys. Res. Commun. 283:627-633(2001).  
Wada H., et al. Biochem. Biophys. Res. Commun. 251:688-692(1998).  
Wood M.A., et al. Hippocampus 15:610-621(2005).  
Sano Y., et al. Am. J. Pathol. 169:132-141(2006).