

Cops3 Antibody - C-terminal region
Rabbit Polyclonal Antibody
Catalog # AI14385**Specification**

Cops3 Antibody - C-terminal region - Product Information

Application	WB
Primary Accession	Q68FW9
Other Accession	NM_001004200 , NP_001004200
Reactivity	Human, Mouse, Rat, Rabbit, Pig, Horse, Bovine, Guinea Pig, Dog
Predicted	Human, Mouse, Rat, Rabbit, Pig, Horse, Bovine, Guinea Pig, Dog
Host	Rabbit
Clonality	Polyclonal
Calculated MW	46kDa KDa

Cops3 Antibody - C-terminal region - Additional Information**Gene ID** 287367**Other Names**

COP9 signalosome complex subunit 3, SGN3, Signalosome subunit 3, Cops3, Csn3

Format

Liquid. Purified antibody supplied in 1x PBS buffer with 0.09% (w/v) sodium azide and 2% sucrose.

Reconstitution & Storage

Add 50 ul of distilled water. Final anti-Cops3 antibody concentration is 1 mg/ml in PBS buffer with 2% sucrose. For longer periods of storage, store at 20°C. Avoid repeat freeze-thaw cycles.

Precautions

Cops3 Antibody - C-terminal region is for research use only and not for use in diagnostic or therapeutic procedures.

Cops3 Antibody - C-terminal region - Protein Information**Name** Cops3**Synonyms** Csn3**Function**

Component of the COP9 signalosome complex (CSN), a complex involved in various cellular and developmental processes (By similarity). The CSN complex is an essential regulator of the ubiquitin (Ubl) conjugation pathway by mediating the deneddylation of the cullin subunits of SCF-type E3 ligase complexes, leading to decrease the Ubl ligase activity of SCF-type complexes such as SCF, CSA or DDB2 (By similarity). The complex is also involved in phosphorylation of p53/TP53, c-jun/JUN, IkappaBalpha/NFKBIA, ITPK1 and IRF8/ICSBP, possibly via its association with

CK2 and PKD kinases (By similarity). CSN-dependent phosphorylation of TP53 and JUN promotes and protects degradation by the Ubl system, respectively (By similarity). Essential to maintain the survival of epiblast cells and thus the development of the postimplantation embryo (By similarity).

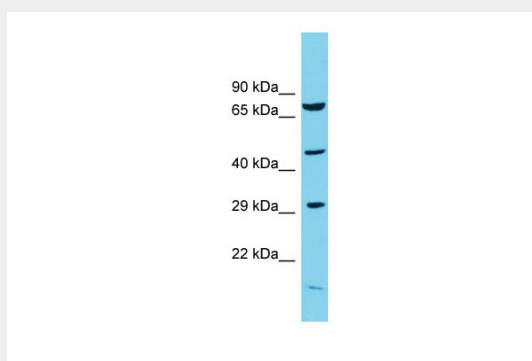
Cellular Location

Cytoplasm {ECO:0000250|UniProtKB:Q9UNS2}. Nucleus {ECO:0000250|UniProtKB:Q9UNS2}

Cops3 Antibody - C-terminal region - Protocols

Provided below are standard protocols that you may find useful for product applications.

- [Western Blot](#)
- [Blocking Peptides](#)
- [Dot Blot](#)
- [Immunohistochemistry](#)
- [Immunofluorescence](#)
- [Immunoprecipitation](#)
- [Flow Cytometry](#)
- [Cell Culture](#)

Cops3 Antibody - C-terminal region - Images

Host: Rabbit

Target Name: Cops3

Sample Tissue: Rat Testis lysates

Antibody Dilution: 1.0µg/ml