

MLF1IP Antibody - N-terminal region
Rabbit Polyclonal Antibody
Catalog # AI14393**Specification**

MLF1IP Antibody - N-terminal region - Product Information

Application	WB
Primary Accession	Q09GN1
Reactivity	Human, Pig, Horse, Bovine
Predicted	Human, Bovine
Host	Rabbit
Clonality	Polyclonal
Calculated MW	35kDa KDa

MLF1IP Antibody - N-terminal region - Additional Information**Format**

Liquid. Purified antibody supplied in 1x PBS buffer with 0.09% (w/v) sodium azide and 2% sucrose.

Reconstitution & Storage

Add 50 ul of distilled water. Final anti-MLF1IP antibody concentration is 1 mg/ml in PBS buffer with 2% sucrose. For longer periods of storage, store at 20°C. Avoid repeat freeze-thaw cycles.

Precautions

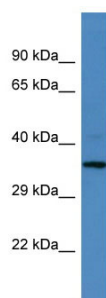
MLF1IP Antibody - N-terminal region is for research use only and not for use in diagnostic or therapeutic procedures.

MLF1IP Antibody - N-terminal region - Protein Information**MLF1IP Antibody - N-terminal region - Protocols**

Provided below are standard protocols that you may find useful for product applications.

- [Western Blot](#)
- [Blocking Peptides](#)
- [Dot Blot](#)
- [Immunohistochemistry](#)
- [Immunofluorescence](#)
- [Immunoprecipitation](#)
- [Flow Cytometry](#)
- [Cell Culture](#)

MLF1IP Antibody - N-terminal region - Images

Host: Rabbit
Target Name: MLF1IP
Sample Tissue: Placenta lysates
Antibody Dilution: 1.0 μ g/ml