

Rph3a antibody - N-terminal region
Rabbit Polyclonal Antibody
Catalog # AI14408**Specification**

Rph3a antibody - N-terminal region - Product Information

Application	WB
Primary Accession	P47708
Other Accession	NM_011286 , NP_035416
Reactivity	Human, Mouse, Rat, Rabbit, Horse, Guinea Pig, Dog
Predicted	Human, Mouse, Rat, Rabbit, Horse, Guinea Pig, Dog
Host	Rabbit
Clonality	Polyclonal
Calculated MW	75kDa KDa

Rph3a antibody - N-terminal region - Additional Information**Gene ID** 19894**Alias Symbol** 2900002P20Rik, AU022689, AW108370
Other Names
Rabphilin-3A, Exophilin-1, Rph3a**Format**

Liquid. Purified antibody supplied in 1x PBS buffer with 0.09% (w/v) sodium azide and 2% sucrose.

Reconstitution & Storage

Add 50 ul of distilled water. Final anti-Rph3a antibody concentration is 1 mg/ml in PBS buffer with 2% sucrose. For longer periods of storage, store at 20°C. Avoid repeat freeze-thaw cycles.

Precautions

Rph3a antibody - N-terminal region is for research use only and not for use in diagnostic or therapeutic procedures.

Rph3a antibody - N-terminal region - Protein Information**Name** Rph3a**Function**

Plays an essential role in docking and fusion steps of regulated exocytosis (By similarity). At the presynaptic level, RPH3A is recruited by RAB3A to the synaptic vesicle membrane in a GTP-dependent manner where it modulates synaptic vesicle trafficking and calcium-triggered neurotransmitter release (By similarity). In the post-synaptic compartment, forms a ternary complex with GRIN2A and DLG4 and regulates NMDA receptor stability. Also plays a role in the exocytosis of arginine vasopressin hormone (By similarity).

Cellular Location

Cytoplasmic vesicle, secretory vesicle, synaptic vesicle membrane {ECO:0000250|UniProtKB:P47709}. Cell projection, dendritic spine {ECO:0000250|UniProtKB:P47709}. Postsynaptic cell membrane {ECO:0000250|UniProtKB:P47709}. Membrane {ECO:0000250|UniProtKB:P47709}; Peripheral membrane protein {ECO:0000250|UniProtKB:P47709}

Tissue Location

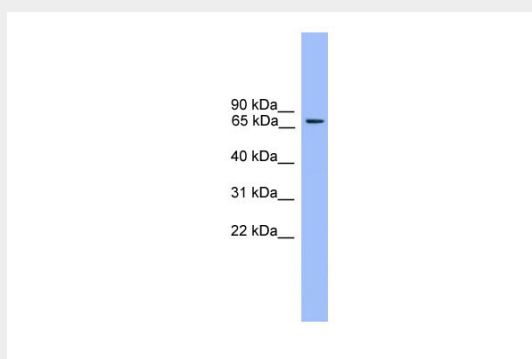
Specifically expressed in brain.

Rph3a antibody - N-terminal region - Protocols

Provided below are standard protocols that you may find useful for product applications.

- [Western Blot](#)
- [Blocking Peptides](#)
- [Dot Blot](#)
- [Immunohistochemistry](#)
- [Immunofluorescence](#)
- [Immunoprecipitation](#)
- [Flow Cytometry](#)
- [Cell Culture](#)

Rph3a antibody - N-terminal region - Images



WB Suggested Anti-Rph3a Antibody Titration: 0.2-1 μ g/ml

ELISA Titer: 1:1562500

Positive Control: Mouse Muscle

Rph3a antibody - N-terminal region - References

Inagaki N., et al. Submitted (NOV-2001) to the EMBL/GenBank/DDBJ databases.
Inagaki N., et al. J. Biochem. 116:239-242(1994).
Fukuda M., et al. J. Biol. Chem. 278:15373-15380(2003).
Munton R.P., et al. Mol. Cell. Proteomics 6:283-293(2007).
Coudevylle N., et al. J. Biol. Chem. 283:35918-35928(2008).