

**PLEKHG2 antibody - middle region**  
**Rabbit Polyclonal Antibody**  
**Catalog # AI14431**

**Specification**

---

**PLEKHG2 antibody - middle region - Product Information**

Application	WB
Primary Accession	<a href="#">O9H7P9</a>
Other Accession	<a href="#">NM_022835</a> , <a href="#">NP_073746</a>
Reactivity	Human, Mouse, Rat, Rabbit, Pig, Bovine, Guinea Pig, Dog
Predicted	Human, Mouse, Rat, Rabbit, Pig, Bovine, Guinea Pig, Dog
Host	Rabbit
Clonality	Polyclonal
Calculated MW	144kDa KDa

**PLEKHG2 antibody - middle region - Additional Information**

**Gene ID** 64857

**Alias Symbol** CLG, DKFZp667J2325, FLJ00018, FLJ22458, FLJ38638, ARHGEF42

**Other Names**

Pleckstrin homology domain-containing family G member 2, PH domain-containing family G member 2, PLEKHG2

**Format**

Liquid. Purified antibody supplied in 1x PBS buffer with 0.09% (w/v) sodium azide and 2% sucrose.

**Reconstitution & Storage**

Add 50 ul of distilled water. Final anti-PLEKHG2 antibody concentration is 1 mg/ml in PBS buffer with 2% sucrose. For longer periods of storage, store at 20°C. Avoid repeat freeze-thaw cycles.

**Precautions**

PLEKHG2 antibody - middle region is for research use only and not for use in diagnostic or therapeutic procedures.

**PLEKHG2 antibody - middle region - Protein Information**

**Name** PLEKHG2

**Function**

May be a transforming oncogene with exchange activity for CDC42 (By similarity). May be a guanine-nucleotide exchange factor (GEF) for RAC1 and CDC42. Activated by the binding to subunits beta and gamma of the heterotrimeric guanine nucleotide-binding protein (G protein) (PubMed:<a href="http://www.uniprot.org/citations/18045877" target="\_blank">18045877</a>). Involved in the regulation of actin polymerization (PubMed:<a

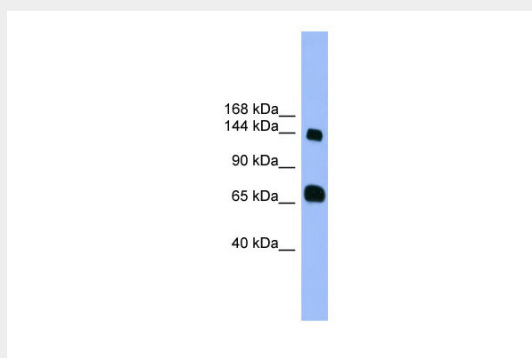
href="http://www.uniprot.org/citations/26573021" target="\_blank">26573021</a>).

### PLEKHG2 antibody - middle region - Protocols

Provided below are standard protocols that you may find useful for product applications.

- [Western Blot](#)
- [Blocking Peptides](#)
- [Dot Blot](#)
- [Immunohistochemistry](#)
- [Immunofluorescence](#)
- [Immunoprecipitation](#)
- [Flow Cytometry](#)
- [Cell Culture](#)

### PLEKHG2 antibody - middle region - Images



WB Suggested Anti-PLEKHG2 Antibody Titration: 1.0 µg/ml  
Positive Control: Fetal Heart

### PLEKHG2 antibody - middle region - References

- Ota T., et al. Nat. Genet. 36:40-45(2004).  
Grimwood J., et al. Nature 428:529-535(2004).  
Mural R.J., et al. Submitted (JUL-2005) to the EMBL/GenBank/DDBJ databases.  
Ueda H., et al. J. Biol. Chem. 283:1946-1953(2008).  
Dephoure N., et al. Proc. Natl. Acad. Sci. U.S.A. 105:10762-10767(2008).