

**Rassf5 Antibody - C-terminal region**  
**Rabbit Polyclonal Antibody**  
**Catalog # AI14436****Specification**

---

**Rassf5 Antibody - C-terminal region - Product Information**

Application	WB
Primary Accession	<a href="#">Q5EBH1</a>
Other Accession	<a href="#">NM_018750</a> , <a href="#">NP_061220</a>
Reactivity	Human, Mouse, Rat, Rabbit, Pig, Horse, Bovine, Guinea Pig, Dog
Predicted	Human, Mouse, Rat, Rabbit, Pig, Horse, Bovine, Guinea Pig, Dog
Host	Rabbit
Clonality	Polyclonal
Calculated MW	47kDa KDa

**Rassf5 Antibody - C-terminal region - Additional Information****Gene ID** 54354**Alias Symbol** 1300019G20Rik, AU042887, Maxp1, Nore1, Nore1A, Nore1B, Rapl**Other Names**

Ras association domain-containing protein 5, New ras effector 1, Regulator for cell adhesion and polarization enriched in lymphoid tissues, RAPL, Rassf5, Nore1, Rapl

**Format**

Liquid. Purified antibody supplied in 1x PBS buffer with 0.09% (w/v) sodium azide and 2% sucrose.

**Reconstitution & Storage**

Add 50 ul of distilled water. Final anti-Rassf5 antibody concentration is 1 mg/ml in PBS buffer with 2% sucrose. For longer periods of storage, store at 20°C. Avoid repeat freeze-thaw cycles.

**Precautions**

Rassf5 Antibody - C-terminal region is for research use only and not for use in diagnostic or therapeutic procedures.

**Rassf5 Antibody - C-terminal region - Protein Information****Name** Rassf5**Synonyms** Nore1, Rapl**Function**

Potential tumor suppressor. Seems to be involved in lymphocyte adhesion by linking RAP1A activation upon T-cell receptor or chemokine stimulation to integrin activation. Isoform 2 stimulates lymphocyte polarization and the patch-like distribution of ITGAL/LFA-1, resulting in an

enhanced adhesion to ICAM1. Together with RAP1A may participate in regulation of microtubule growth. The association of isoform 2 with activated RAP1A is required for directional movement of endothelial cells during wound healing (By similarity). May be involved in regulation of Ras apoptotic function. The RASSF5-STK4/MST1 complex may mediate HRAS and KRAS induced apoptosis.

#### **Cellular Location**

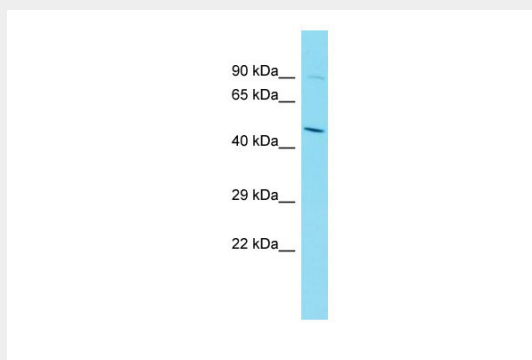
Cytoplasm. Cytoplasm, cytoskeleton. Note=Isoform 2 is mainly located in the perinuclear region of unstimulated primary T-cells. Upon stimulation translocates to the leading edge and colocalizes with ITGAL/LFA-1 in the peripheral zone of the immunological synapse. Isoform 2 is localized to growing microtubules in vascular endothelial cells and is dissociated from microtubules by activated RAP1A (By similarity).

#### **Rassf5 Antibody - C-terminal region - Protocols**

Provided below are standard protocols that you may find useful for product applications.

- [Western Blot](#)
- [Blocking Peptides](#)
- [Dot Blot](#)
- [Immunohistochemistry](#)
- [Immunofluorescence](#)
- [Immunoprecipitation](#)
- [Flow Cytometry](#)
- [Cell Culture](#)

#### **Rassf5 Antibody - C-terminal region - Images**



Host: Rabbit  
Target Name: Rassf5  
Sample Tissue: Mouse Spleen lysates  
Antibody Dilution: 1.0µg/ml

#### **Rassf5 Antibody - C-terminal region - References**

Vavvas D.,et al.J. Biol. Chem. 273:5439-5442(1998).  
Katagiri K.,et al.Nat. Immunol. 4:741-748(2003).  
Okazaki N.,et al.DNA Res. 11:127-135(2004).  
Carninci P.,et al.Science 309:1559-1563(2005).  
Khokhlatchev A.,et al.Curr. Biol. 12:253-265(2002).