

**Olr806 Antibody - middle region**  
**Rabbit Polyclonal Antibody**  
**Catalog # AI14447**

**Specification**

---

**Olr806 Antibody - middle region - Product Information**

Application	WB
Primary Accession	<a href="#">D3ZFL4</a>
Other Accession	<a href="#">NM_001000976</a> , <a href="#">NP_001000976</a>
Reactivity	Human, Mouse, Rat, Rabbit, Horse, Bovine, Guinea Pig, Dog
Predicted	Human, Mouse, Rat, Rabbit, Pig, Horse, Bovine, Guinea Pig, Dog
Host	Rabbit
Clonality	Polyclonal
Calculated MW	34kDa KDa

**Olr806 Antibody - middle region - Additional Information**

**Format**

Liquid. Purified antibody supplied in 1x PBS buffer with 0.09% (w/v) sodium azide and 2% sucrose.

**Reconstitution & Storage**

Add 50 ul of distilled water. Final anti-Olr806 antibody concentration is 1 mg/ml in PBS buffer with 2% sucrose. For longer periods of storage, store at 20°C. Avoid repeat freeze-thaw cycles.

**Precautions**

Olr806 Antibody - middle region is for research use only and not for use in diagnostic or therapeutic procedures.

**Olr806 Antibody - middle region - Protein Information**

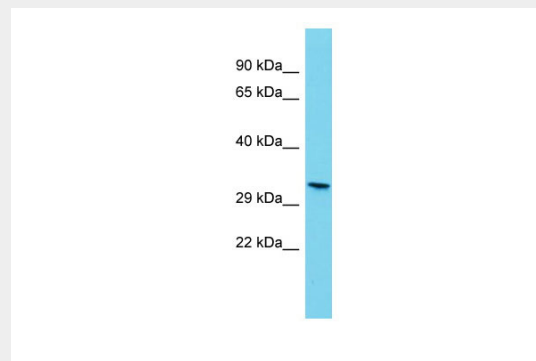
**Olr806 Antibody - middle region - Protocols**

Provided below are standard protocols that you may find useful for product applications.

- [Western Blot](#)
- [Blocking Peptides](#)
- [Dot Blot](#)
- [Immunohistochemistry](#)
- [Immunofluorescence](#)
- [Immunoprecipitation](#)
- [Flow Cytometry](#)
- [Cell Culture](#)

**Olr806 Antibody - middle region - Images**

---



Host: Rabbit  
Target Name: Olr806  
Sample Tissue: Rat Pancreas lysates  
Antibody Dilution: 1.0 $\mu$ g/ml