

Adcyap1r1 antibody - C-terminal region
Rabbit Polyclonal Antibody
Catalog # AI14480**Specification**

Adcyap1r1 antibody - C-terminal region - Product Information

Application	WB
Primary Accession	P32215-2
Other Accession	NM_133511 , NP_598195
Reactivity	Human, Mouse, Rat, Rabbit, Pig, Sheep, Horse, Bovine, Guinea Pig, Dog
Predicted	Human, Mouse, Rabbit, Pig, Chicken, Horse, Guinea Pig, Dog
Host	Rabbit
Clonality	Polyclonal
Calculated MW	54kDa KDa

Adcyap1r1 antibody - C-terminal region - Additional Information

Alias Symbol	PACAP-R1A, PACAPR1 PACAPR1A, PAC1-R, PACAPR1, PACAPR1A
--------------	--

Format

Liquid. Purified antibody supplied in 1x PBS buffer with 0.09% (w/v) sodium azide and 2% sucrose.

Reconstitution & Storage

Add 50 ul of distilled water. Final anti-Adcyap1r1 antibody concentration is 1 mg/ml in PBS buffer with 2% sucrose. For longer periods of storage, store at 20°C. Avoid repeat freeze-thaw cycles.

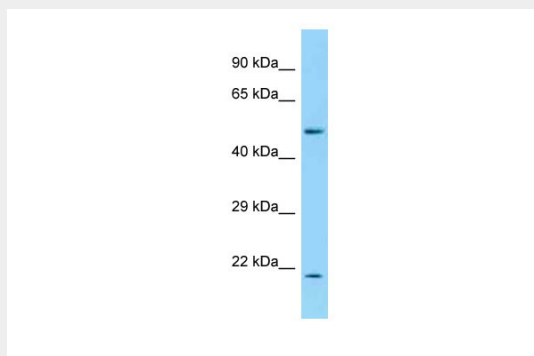
Precautions

Adcyap1r1 antibody - C-terminal region is for research use only and not for use in diagnostic or therapeutic procedures.

Adcyap1r1 antibody - C-terminal region - Protein Information**Adcyap1r1 antibody - C-terminal region - Protocols**

Provided below are standard protocols that you may find useful for product applications.

- [Western Blot](#)
- [Blocking Peptides](#)
- [Dot Blot](#)
- [Immunohistochemistry](#)
- [Immunofluorescence](#)
- [Immunoprecipitation](#)
- [Flow Cytometry](#)
- [Cell Culture](#)

Adcyap1r1 antibody - C-terminal region - Images

WB Suggested Anti-Adcyap1r1 Antibody Titration: 1.0 μ g/ml
Positive Control: Rat Brain